



City of La Porte

Wayfinding Sign System

30% Design Document Package
November 1, 2017

Design Team



440 East Brackenridge Street
Fort Wayne, Indiana 46802
260-424-2366



JONES PETRIE RAFINSKI
108 West Columbia Street
Fort Wayne, Indiana 46802
260-422-2522



7212 North Shadeland Ave, Suite 200
Indianapolis, Indiana 46250
317-579-9100

SHEET INDEX

Sheet 1	Sheet Index	Sheet 34	Sign Location Key Map For SW Quadrant
Sheet 2	General Notes	Sheet 35	Signs 36 and 37
Sheet 3	Sign Examples	Sheet 36	Signs 38 and 39
Sheet 4	Sign Panel Details, Colors, Finishes and Fonts	Sheet 37	Signs 40 and 41
Sheet 5	Sign Type 'A' Detail	Sheet 38	Signs 42 and 43
Sheet 6	Sign Type 'B' Detail	Sheet 39	Signs 44 and 45
Sheet 7	Sign Type 'C' Detail	Sheet 40	Signs 46 and 47
Sheet 8	Sign Type 'D' Detail	Sheet 41	Signs 48 and 49
Sheet 9	Sign Type 'E' Detail	Sheet 42	Signs 50 and 51
Sheet 10	Sign Type 'F' Detail	Sheet 43	Signs 52 and 53
Sheet 11	Post Boot Detail	Sheet 44	Signs 54 and 55
Sheet 12	Sign Foundation Details	Sheet 45	Signs 56 and 57
Sheet 13	Quadrant Key Map for Sign Locations	Sheet 46	Sign Location Key Map For SE Quadrant
Sheet 14	Sign Location Key Map For NW Quadrant	Sheet 47	Signs 58 and 59
Sheet 15	Signs 1 and 2	Sheet 48	Signs 60 and 61
Sheet 16	Signs 3 and 4	Sheet 49	Signs 62 and 63
Sheet 17	Signs 5 and 6	Sheet 50	Signs 64 and 65
Sheet 18	Signs 7 and 8	Sheet 51	Signs 66 and 67
Sheet 19	Signs 9 and 10	Sheet 52	Signs 68 and 69
Sheet 20	Signs 11 and 12	Sheet 53	Signs 70 and 71
Sheet 21	Signs 13 and 14	Sheet 54	Signs 72 and 73
Sheet 22	Signs 15 and 16	Sheet 55	Signs 74 and 75
Sheet 23	Signs 17 and 18	Sheet 56	Sign 76
Sheet 24	Signs 19 and 20	Sheet 57	Gateway Examples
Sheet 25	Signs 21 and 22	Sheet 58	Gateway Panel Details, Colors, Finishes, and Fonts
Sheet 26	Signs 23 and 24	Sheet 59	Gateway Type 'A' Detail
Sheet 27	Signs 25 and 26	Sheet 60	Gateway Type 'B' Detail
Sheet 28	Signs 27 and 28	Sheet 61	Gateway Foundation Details
Sheet 29	Sign 29	Sheet 62	Gateway Location Key Map
Sheet 30	Sign Location Key Map For NE Quadrant	Sheet 63	Gateways A and B
Sheet 31	Signs 30 and 31	Sheet 64	Gateways C and D
Sheet 32	Signs 32 and 33	Sheet 65	Gateways E and F
Sheet 33	Signs 34 and 35	Sheet 66	Gateway G

Design Team:



30% Design Document Package
La Porte Wayfinding Signage
 LaPorte, Indiana

Sheet Title:

Sheet Index

Date: November 1, 2017

Drawn By: NGD

Scale: NTS

Project: 2017-0078



Sheet
1

General Project Notes

1. The General Project Notes apply to all drawings in this set, and to the process of construction. These notes are part of the binding contract between the Owner and Contractor.
2. Contractor shall provide detailed shop drawings for approval by Owner prior to fabrication of any sign components. Drawings shall include copy and arrow layout for each sign panel.
3. Field conditions unfavorable to executing the work planned shall immediately be brought to the attention of the Owner for resolution prior to proceeding.
4. Sign locations shown on drawings are approximate. Final locations may be field adjusted as necessary to accommodate existing utilities, sight lines, vegetation and other existing site conditions. Contractor shall stake final location for approval by Owner prior to installation and post utility locating.
5. If the contractor, in the course of the work, finds any discrepancies between the plans and the physical conditions of the locality, or any error or omissions in the plans or in the layout, it shall be his/her duty to immediately inform the Owner.
6. Prior to demolishing or installing any work, the contractor shall notify all utility entities and have them located and mark or re-mark their facilities at each sign site.
7. The Contractor shall obtain right-of-way cut permit(s) from City of La Porte Right-of-Way Department and Indiana Department of Transportation. City and State design approvals will be obtained by Owner. Materials and execution of the work shall be in accordance with these plans.
8. The contractor shall preserve and protect items that do not reasonably interfere with demolition or construction. Damage by the contractor to City, State or privately owned property shall be restored at the Contractor's expense.
9. Contractor is responsible for providing barricades and safety measures for all areas being demolished and constructed.
10. Contractor shall provide traffic control measures per City and State specifications within right-of-way. Coordinate placement of traffic control measures with Owner prior to beginning work.
11. The Contractor shall not obstruct access to any public sidewalk or street without the authorization of the City/Owner.
12. Electronic files shall be made available to contractor for bidding, fabrication, and installation of wayfinding signs.
13. Roadways shall have a 1.5' appurtenance free area from face of curb or edge of the travel lane if no curb exists. This area shall be void of sign posts and panels. Signs constructed within the appurtenance free area shall be relocated at the contractor's expense.

General Demolition Notes

1. The demolition required for this project may include the selective removal and subsequent off-site disposal of concrete sidewalk. Existing base material shall remain. Pour new sidewalk atop existing, 95% compacted base material. If base material does not exist, contact Owner's representative for solution.
2. Provide sequence of demolition and removal work. Provide uninterrupted access to adjacent properties and businesses during construction. Minimize disruption to adjacent owned or tenants' operations.
3. Owner assumes no responsibility for actual condition of items or structures to be demolished.
4. All existing site improvements to remain shall be protected from damage.
5. Do not close, block or otherwise obstruct streets, walks, or other occupied or used facilities without notifying the proper authorities and/or securing the needed permits. Provide alternate routes around obstructed areas. Coordinate closures with adjacent property Owners and Tenants.
6. Do not use cutting torches for removal until area is cleared of flammable materials.
7. Existing utilities shall remain in service and be protected against damage during demolition and construction operations.
8. Contractor must adhere to all government regulations pertaining to environmental protection throughout the demolition process.
9. Remove from site: debris, rubbish and other materials resulting from demolition operations. Transport and legally dispose off site. If hazardous materials are encountered during demolition operations notify Owner's representative for change order process. Removal must comply with applicable regulations and laws governing their removal.
10. Restore any demolition performed in excess of that required at Contractor's expense.

Reinforcement

1. Perform all reinforcing work in accordance with CRSI Manual of Standard Practice, and conform to ACI 315.
2. All reinforcing shall be deformed bars conforming to ASTM A615, Grade 60.
3. Fabrication and placement tolerances for reinforcing shall be in accordance with ACI 301.
4. Provide 1.5 inches minimum cover at sides and 3 inches minimum cover at the base for reinforcement protection.
5. Provide all accessories necessary to support reinforcing at positions shown on the plans. All reinforcement to be held securely in proper position in accordance with ACI 318-99.
6. Set anchor rods with wood positioning templates and brace against displacement.

Earthwork

1. The work covered by this section consists of furnishing equipment, tools, labor, fuel, materials, and supervision necessary for excavation and restoration activities as required to complete the work in accordance with the plans and these specifications and as directed by the owner.
2. The excavation for the sign foundations, including the removal and placement of removed soils shall be limited to the area directly adjacent to the sign foundation.
3. The excavation shall be maintained in such condition that the work will be well drained at all times. In the event it is necessary to interrupt existing surface drainage, sewerage, or under drainage, then temporary drainage facilities shall be considered an incidental to the construction of the project.
4. Disturbed areas shall be fine graded and broadcast seeded with Turf Type Tall Fescue seed mixture at 6 Lbs./1,000 SFT. Apply wheat straw mulch over seeded areas. Slopes greater than 3:1 shall have erosion control fabric placed as part of the seeding and restoration process.
5. Excess materials shall be removed from the site and disposed of properly by the contractor.

Sign Design Criteria

1. Sign panels shall be 6061-T651 aluminum plate.
2. Sign posts shall be 3/16" wall thickness 6061-T6511 sharp corner aluminum tubing cut to within 1/8" tolerance.
3. Base plates shall be 1/2" thick 6061-T651 aluminum plate.
4. Hardware used for fastening sign panels to posts shall be stainless steel, and shall be painted PMS 302 blue to match panel and post.

Design Team:



30% Design Document Package
La Porte Wayfinding Signage
LaPorte, Indiana

Sheet Title:

General Notes

Date: November 1, 2017

Drawn By: NGD

Scale: NTS

Project: 2017-0078



Sheet

2



Sign Type 'A'
See Sheet 5



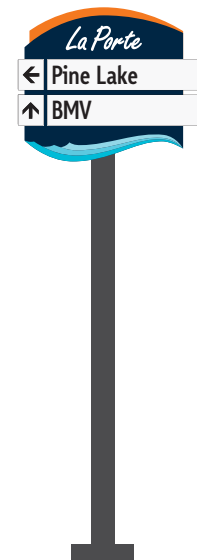
Sign Type 'B'
See Sheet 6



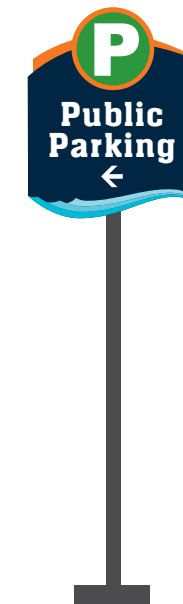
Sign Type 'C'
See Sheet 7



Sign Type 'D'
See Sheet 8



Sign Type 'E'
See Sheet 9



Sign Type 'F'
See Sheet 10

Design Team:



30% Design Document Package
La Porte Wayfinding Signage
LaPorte, Indiana

Sheet Title:

Sign Examples

Date: November 1, 2017
 Drawn By: NGD
 Scale: NTS
 Project: 2017-0078



SIGN COLORS AND FINISHES

Sign Body Colors (for Vinyl Paint w/Closest PMS equivalent denoted)



Background Paint, Sign Post, Base Paint, and Back of Sign Color (PMS 302)



Bottom Panel Accent Color (PMS 7459)



Bottom Panel Accent Color (PMS 7457)



Copy and Arrows Color. Black



Top Panel and Destination Panel Accent Color (PMS 2018)



Bottom Panel Accent Color (PMS 7458)

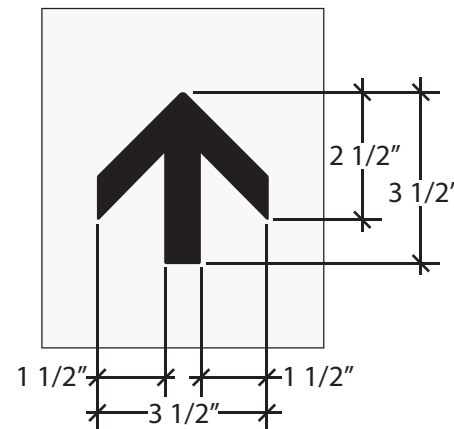
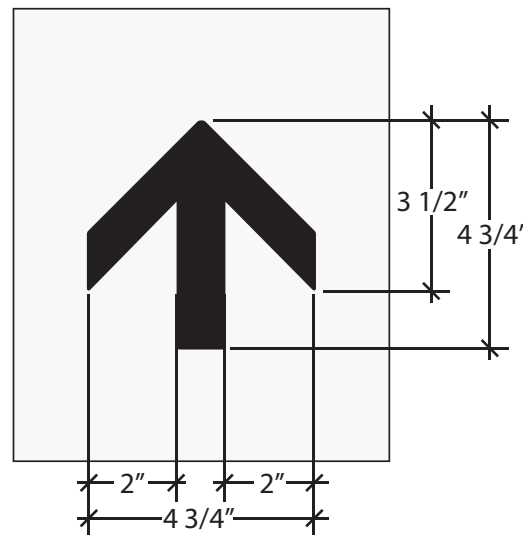


Arrow and Destination Panels, White Reflective Vinyl

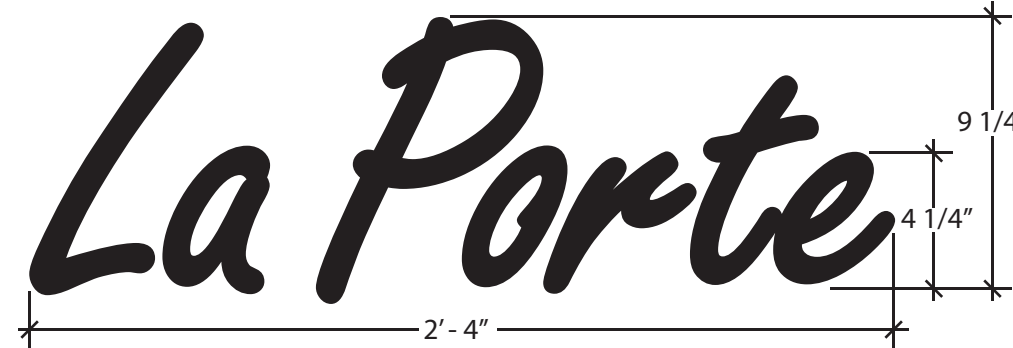


Parking Emblem Color (PMS 7739)

SYMBOL LEGEND



LA PORTE TEXT DIMENSIONS



For La Porte text on Gateways, see Sheet 58.

SIGN PANEL TYPOGRAPHY

Font for Destinations

Wayfinding Sans Condensed Bold Font - For All Sign Types

Substitutions for font styles is not permitted.

Aa Bb Cc Dd Ee Gg Hh Ii
 Jj Kk Ll Mm Nn Oo Pp Qq Rr
 1 2 3 4 5 6 7 8 9 0

Font for Street Names and Public Parking

akaChen Font - For All Sign Types

Substitutions for font styles is not permitted.

Aa Bb Cc Dd Ee Gg Hh Ii
 Jj Kk Ll Mm Nn Oo Pp Qq Rr
 1 2 3 4 5 6 7 8 9 0

Design Team:



30% Design Document Package

La Porte Wayfinding Signage

LaPorte, Indiana

Sheet Title:

Sign Panel Details
 Colors, Finishes & Fonts

Date: November 1, 2017

Drawn By: NGD

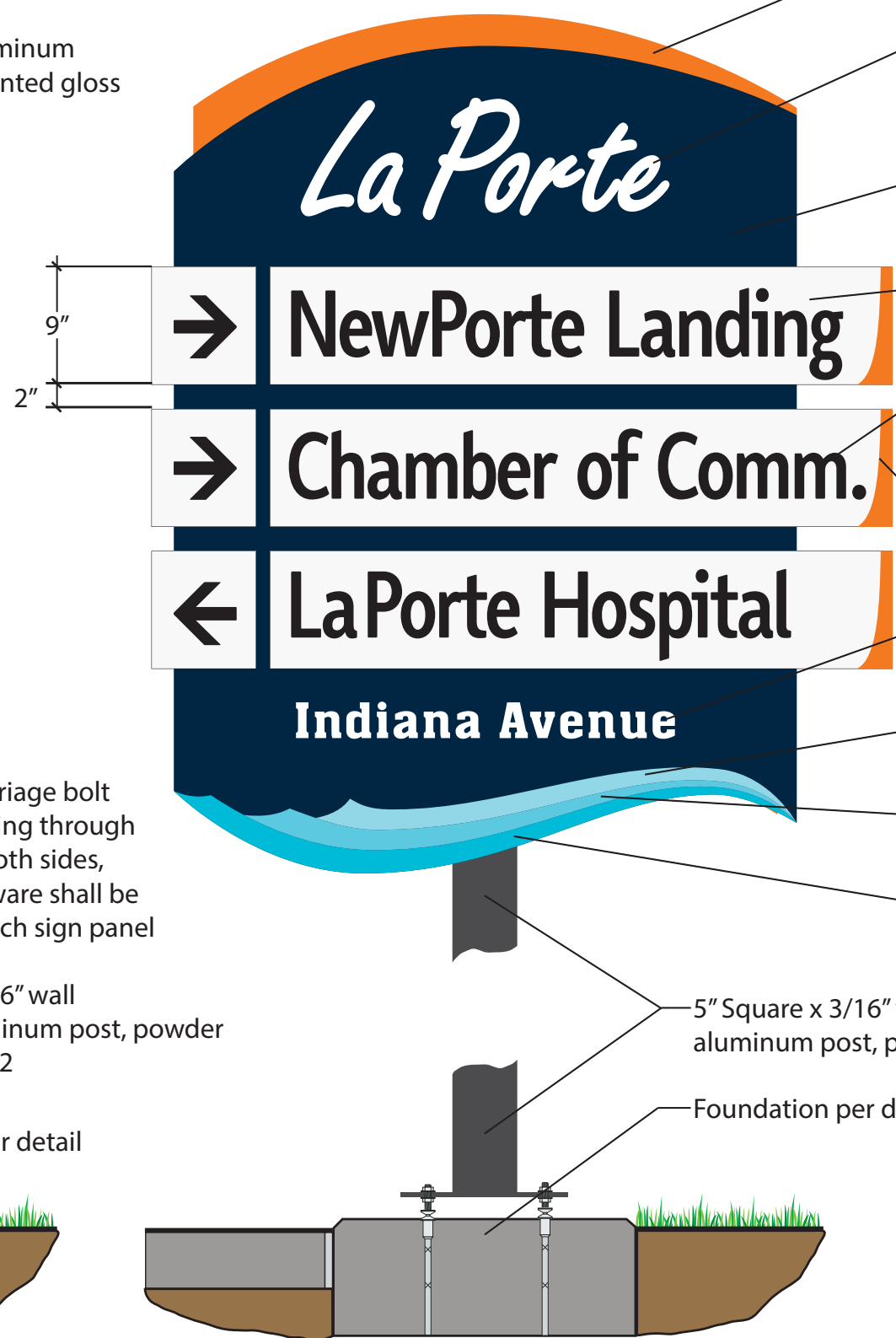
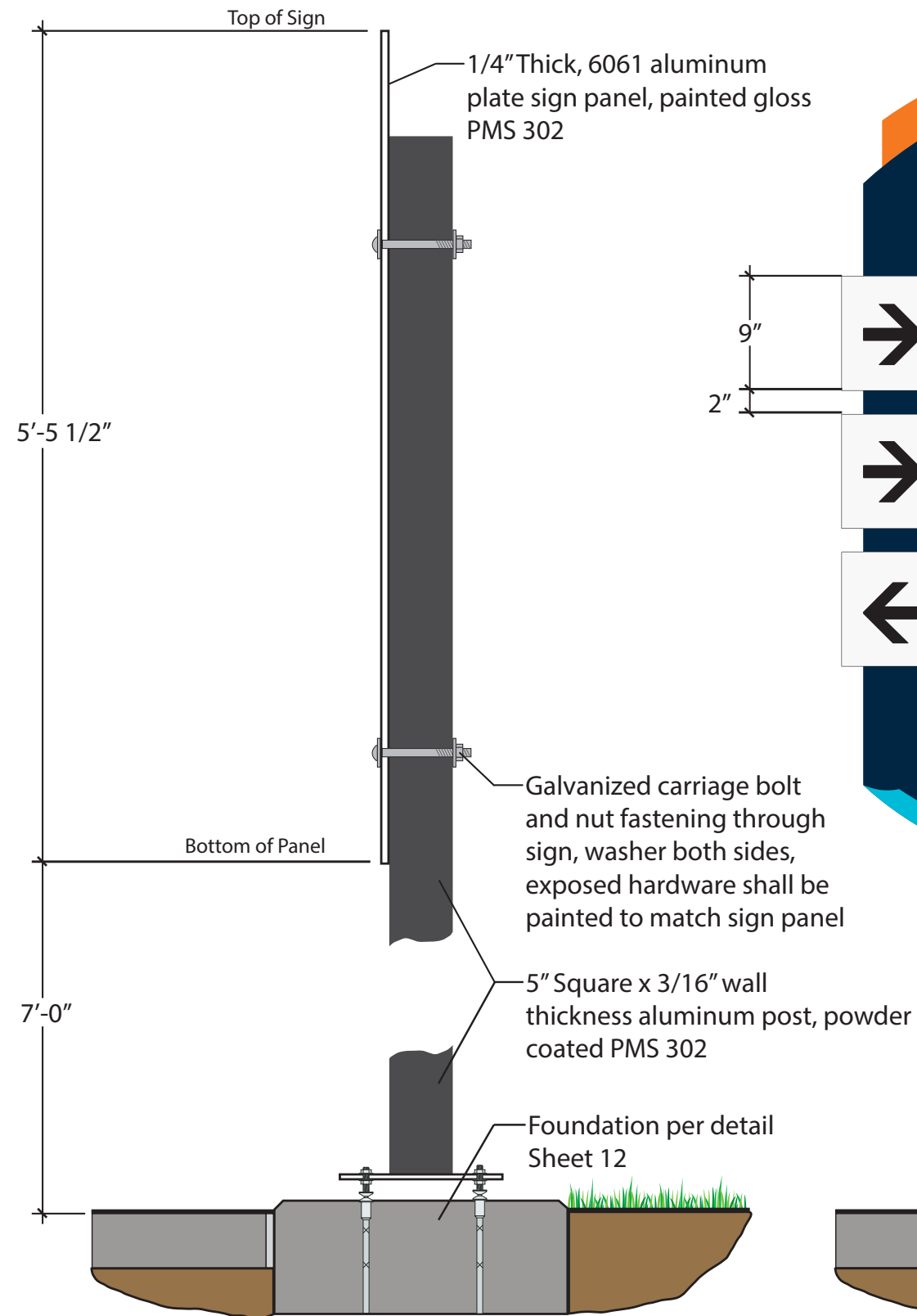
Scale: NTS

Project: 2017-0078



Sheet

4



- Background header color shall be PMS 2018 vinyl
- Note: La Porte lettering to be provided via electronic format. See Sheet 4 for logo specifications
- 1/4" thick, 6061 aluminum plate sign panel, painted gloss PMS 302
- 1/4" thick, 6061 aluminum plate sign panel reflective white
- Copy and arrows shall be black reflective vinyl 5" tall uppercase and 3 1/2" tall lowercase
- Background accent color shall be PMS 2018 vinyl
- Copy shall be white reflective vinyl 2. 3/4" tall uppercase and 2" tall lowercase
- Background accent color shall be PMS 7457 vinyl
- Background accent color shall be PMS 7458 vinyl
- Background accent color shall be PMS 7459 vinyl

- 5" Square x 3/16" wall thickness aluminum post, powder coated PMS 302
- Foundation per detail Sheet 12

Design Team:

JONES PETRIE RAFINSKI

BALDUS

30% Design Document Package

La Porte Wayfinding Signage

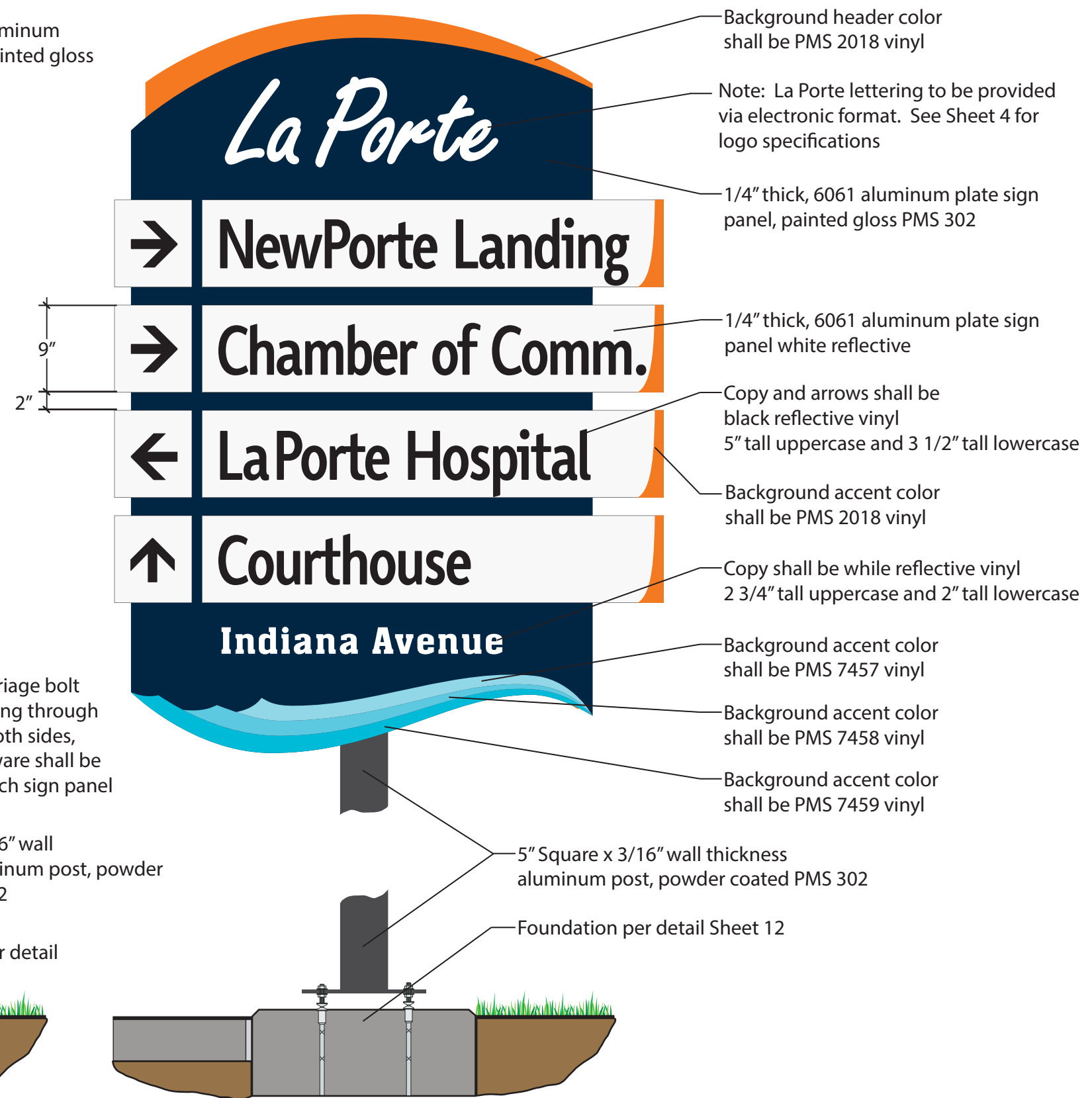
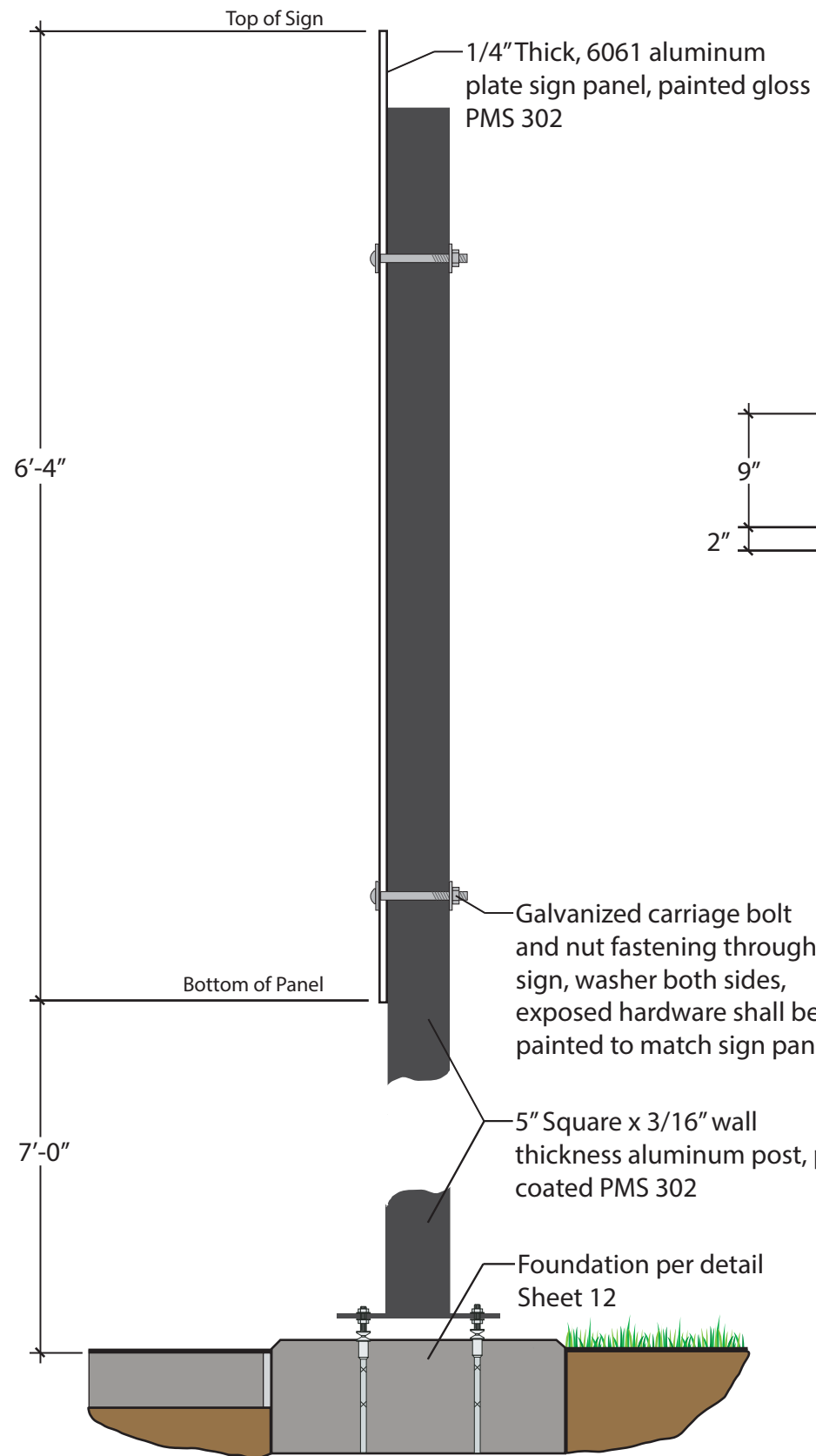
LaPorte, Indiana

Sheet Title:

Sign Type 'A' Detail

Date:	November 1, 2017
Drawn By:	NGD
Scale:	NTS
Project:	2017-0078

Sheet
5



Design Team:

JONES PETRIE RAFINSKI

BALDUS

30% Design Document Package

La Porte Wayfinding Signage

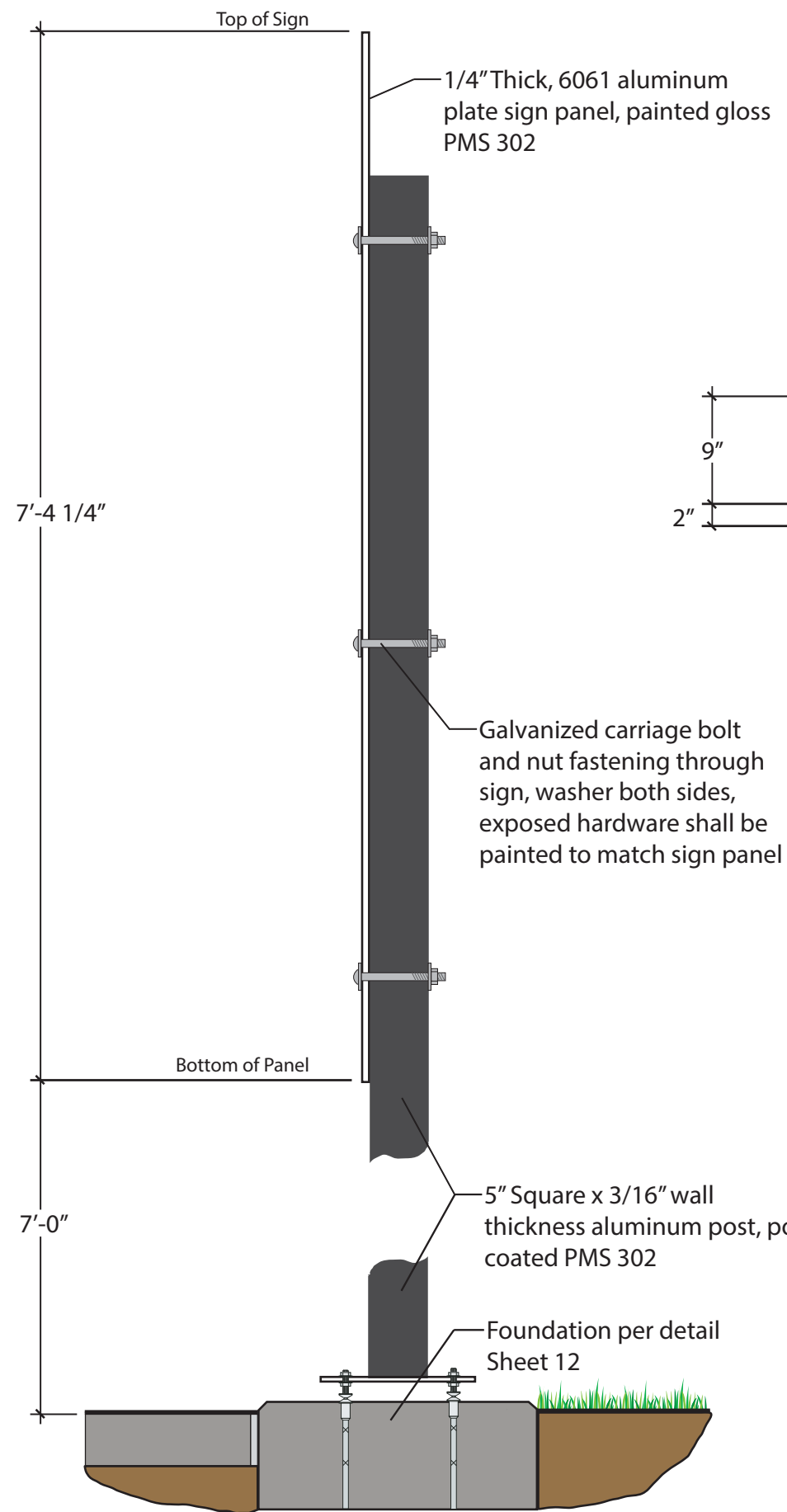
LaPorte, Indiana

Sheet Title:

Sign Type 'B' Detail

Date:	November 1, 2017
Drawn By:	NGD
Scale:	NTS
Project:	2017-0078

Sheet
6



Design Team:



30% Design Document Package

La Porte Wayfinding Signage

LaPorte, Indiana

Sheet Title:

Sign Type 'C' Detail

Date: November 1, 2017

Drawn By: NGD

Scale: NTS

Project: 2017-0078



Sheet

7

Design Team:



30% Design Document Package
La Porte Wayfinding Signage
LaPorte, Indiana

Sheet Title:

Sign Type 'D' Detail

Date: November 1, 2017

Drawn By: NGD

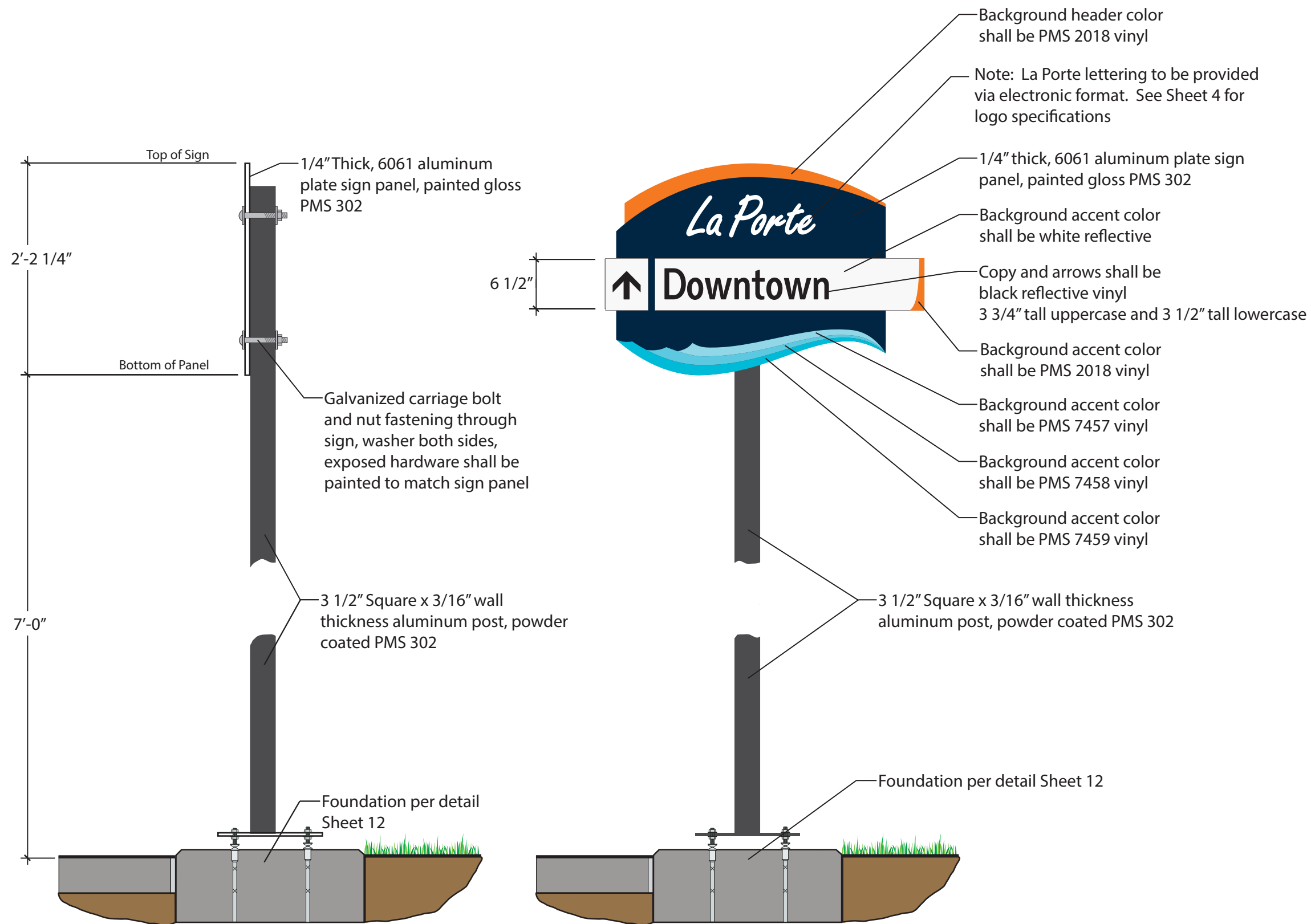
Scale: NTS

Project: 2017-0078

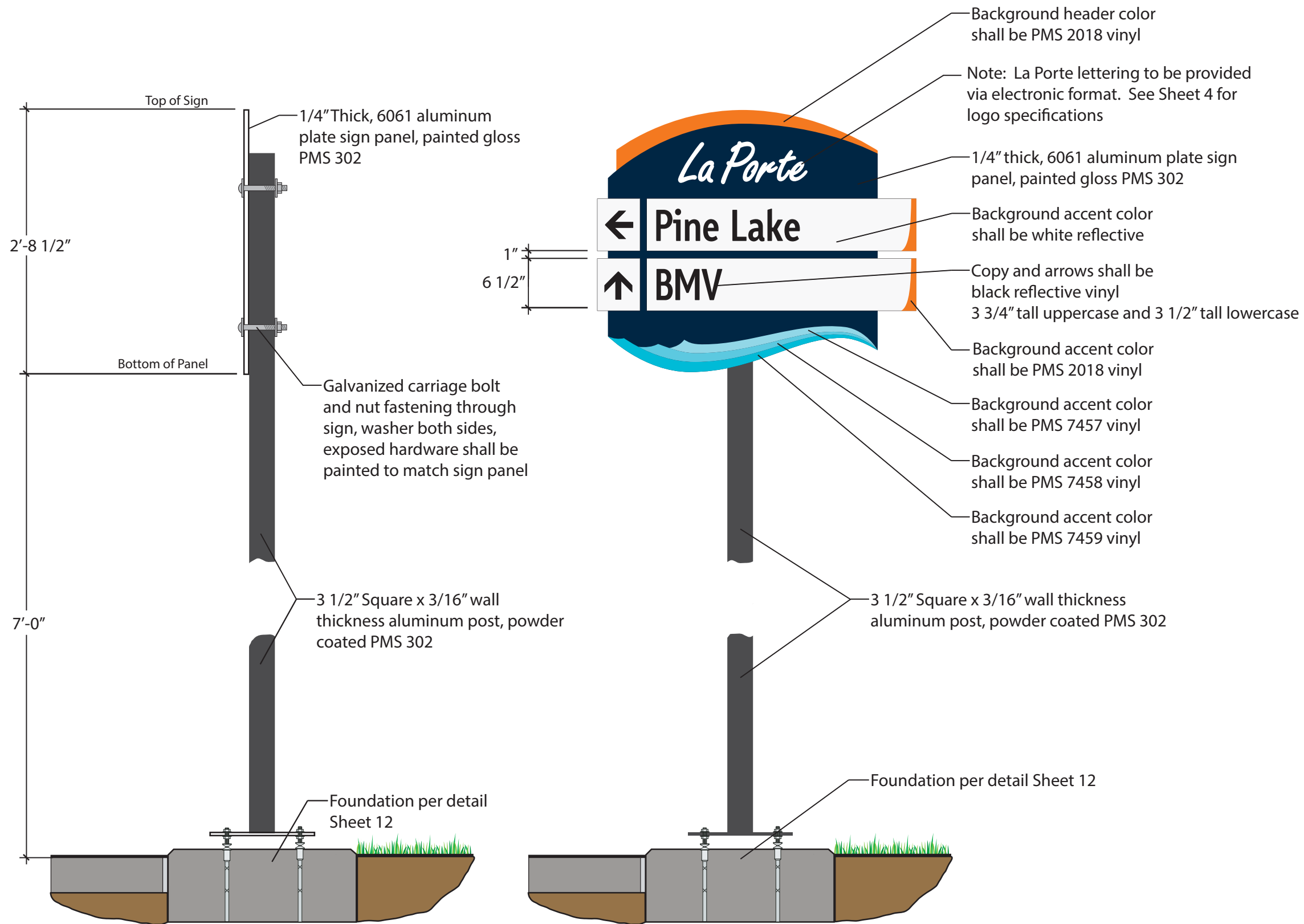


Sheet

8



Signs can be mounted on existing poles when noted and with approval of the City of La Porte.



Signs can be mounted on existing poles when noted and with approval of the City of La Porte.

Design Team:



30% Design Document Package

La Porte Wayfinding Signage

LaPorte, Indiana

Sheet Title:

Sign Type 'E' Detail

Date: November 1, 2017

Drawn By: NGD

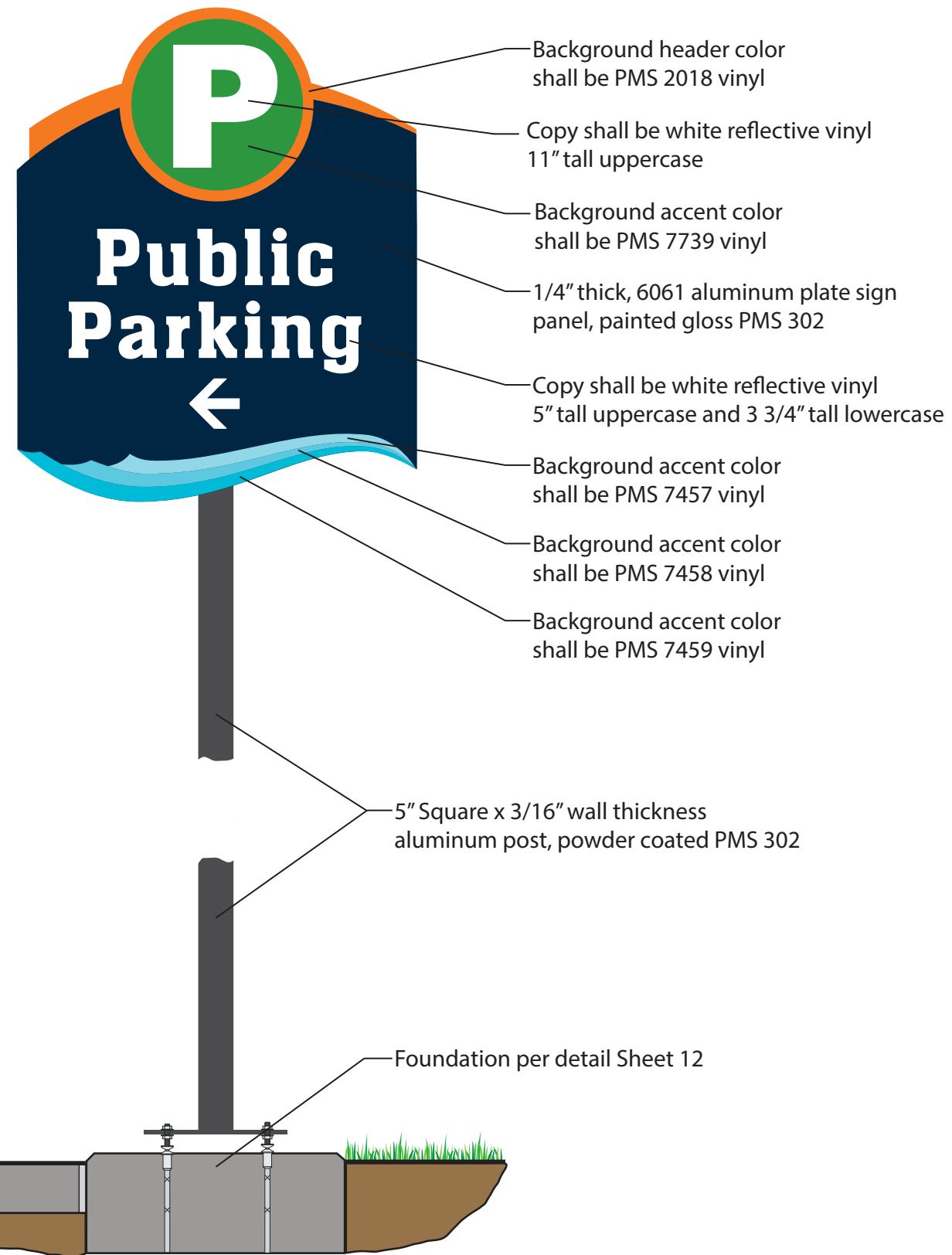
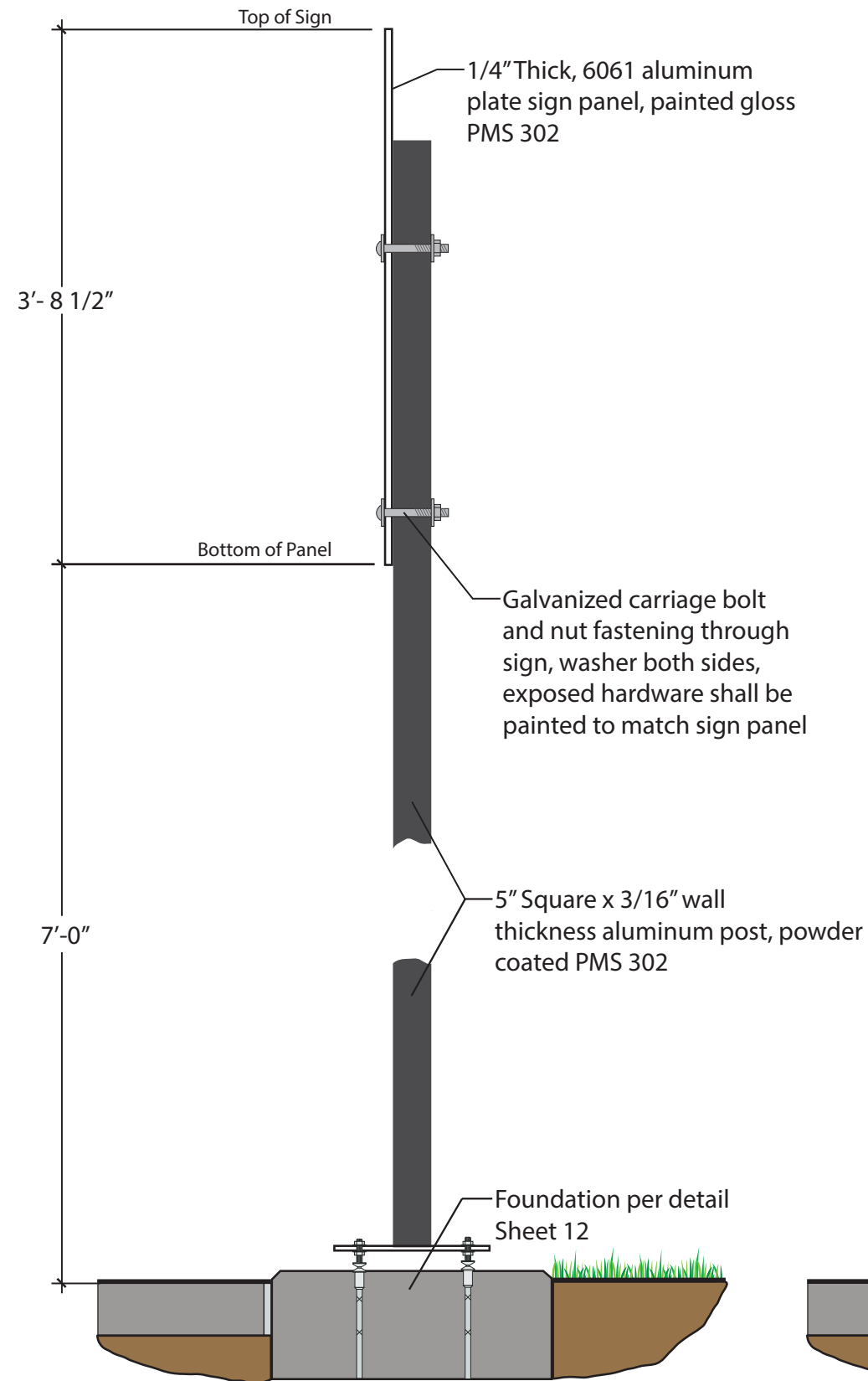
Scale: NTS

Project: 2017-0078



Sheet

9



Signs can be mounted on existing poles when noted and with approval of the City of La Porte.

Design Team:



30% Design Document Package

La Porte Wayfinding Signage

LaPorte, Indiana

Sheet Title:

Sign Type 'F' Detail

Date: November 1, 2017

Drawn By: NGD

Scale: NTS

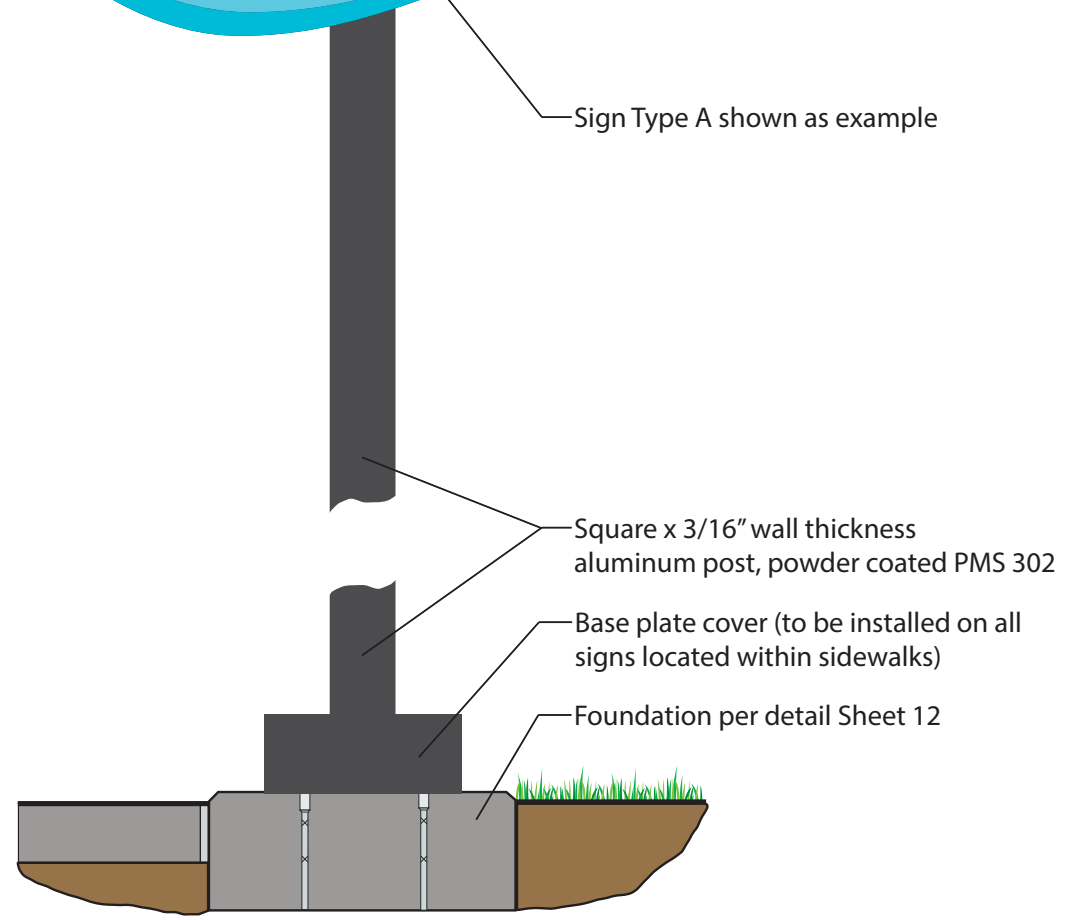
Project: 2017-0078



Sheet
10



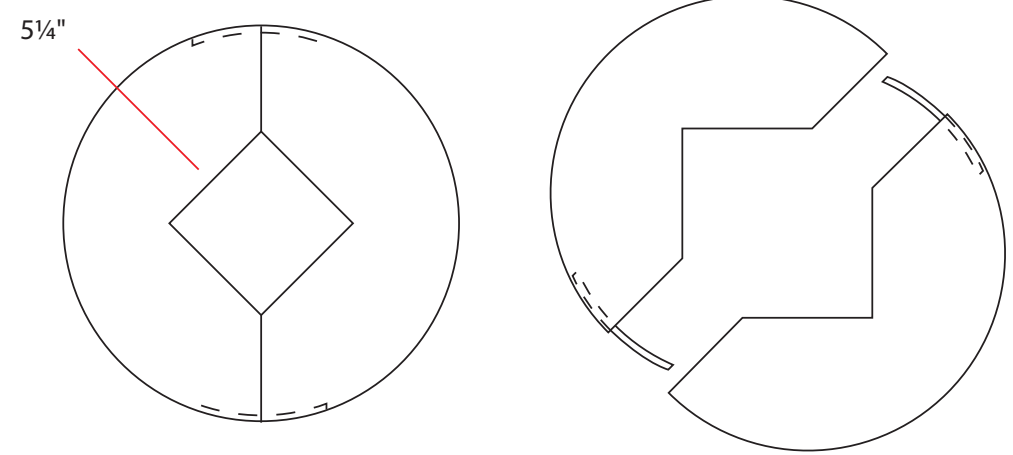
Sign Type A shown as example



Square x 3/16" wall thickness aluminum post, powder coated PMS 302

Base plate cover (to be installed on all signs located within sidewalks)

Foundation per detail Sheet 12



LARGE 2 PIECE BASE COVER
.125" wall thickness P/C black
attached with tap screw and
welded flange (~5 1/2" x 1 3/4")

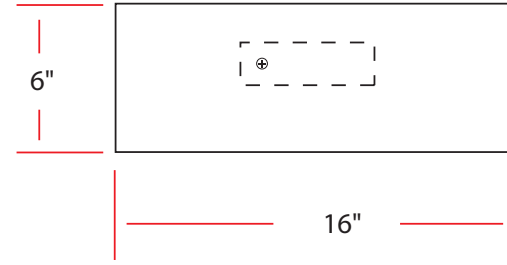
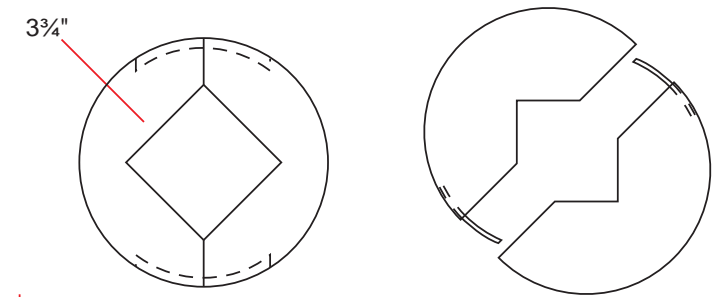
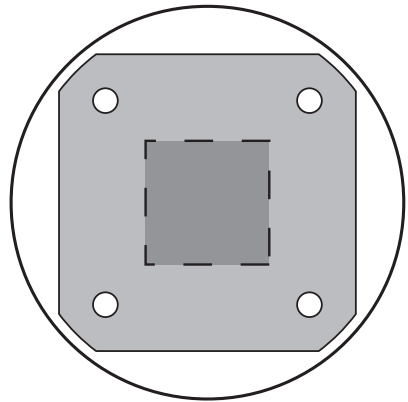
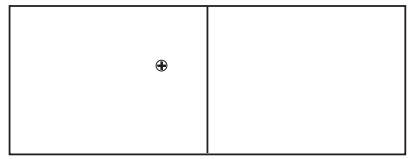
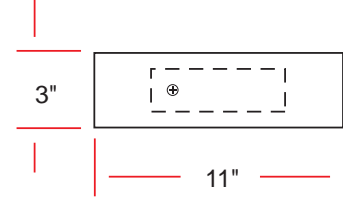


Diagram Showing Exterior of large base cover and inside showing Sign Baseplate.



SMALL 2 PIECE BASE COVER
.125" wall thickness P/C black
attached with tap screw and
welded flange (~5 1/2" x 1 3/4")



All signs located within sidewalks (and others upon approval of City of La Porte) to be installed with boot around base of post.



30% Design Document Package
La Porte Wayfinding Signage
LaPorte, Indiana

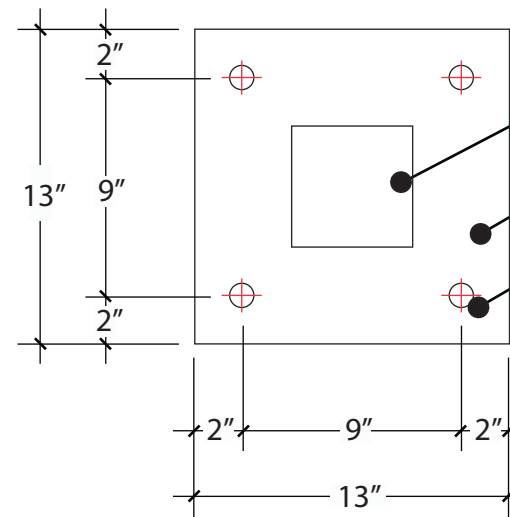
Sheet Title:
Post Boot Detail

Date:	November 1, 2017
Drawn By:	NGD
Scale:	NTS
Project:	2017-0078



Base Plate Assembly Procedure

1. Weld post to base plate as noted. Powder coat finish.
2. Place anchor bolts in concrete foundation to base plate plan as shown.
3. Install galvanized, leveling nut on each anchor bolt.
4. Place galvanized washer on nut.
5. Install post/base plate on anchor bolts.
6. Level post.
7. Install galvanized washer on anchor bolts.
8. Install galvanized nut on anchor bolt atop washer.



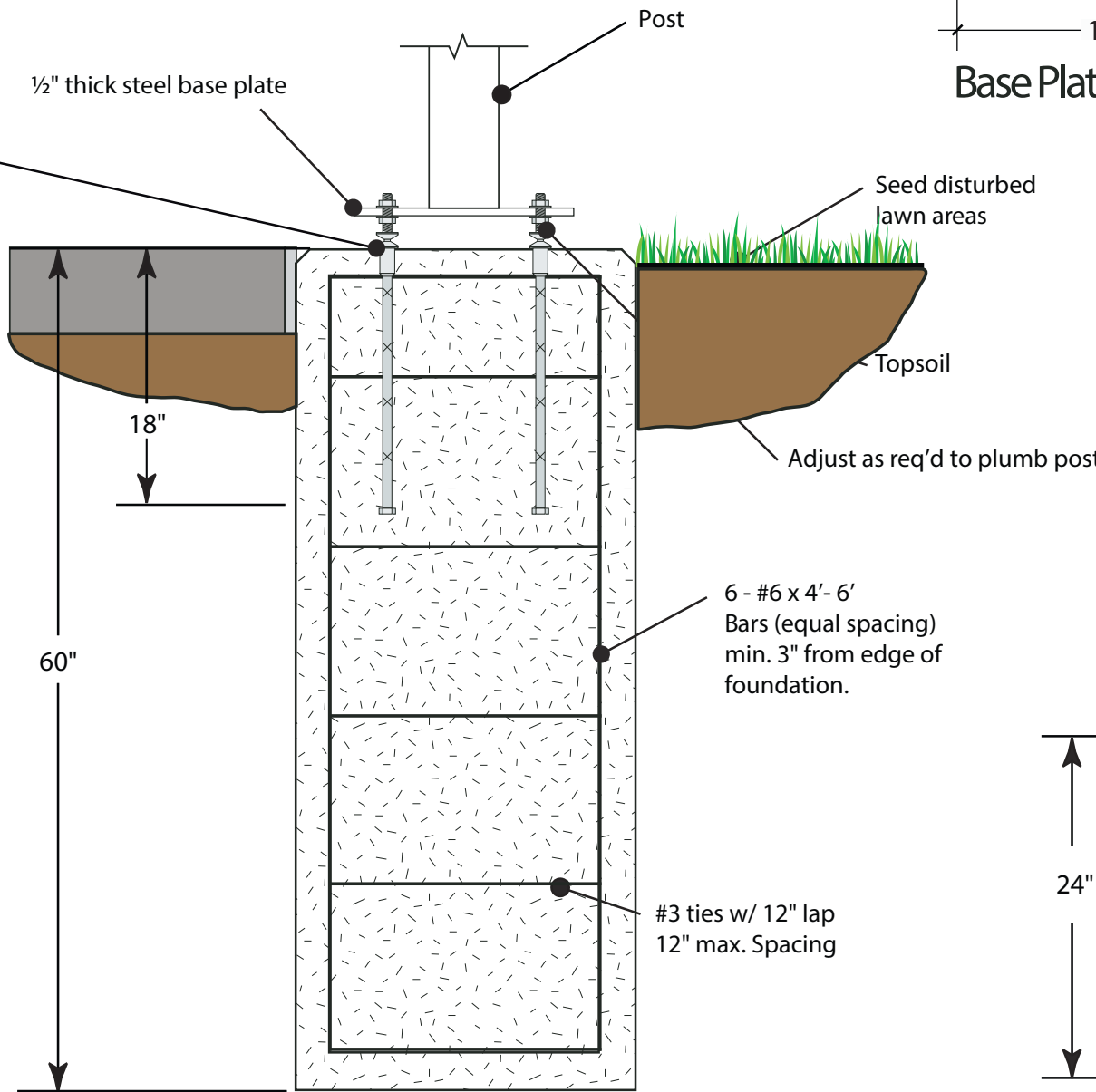
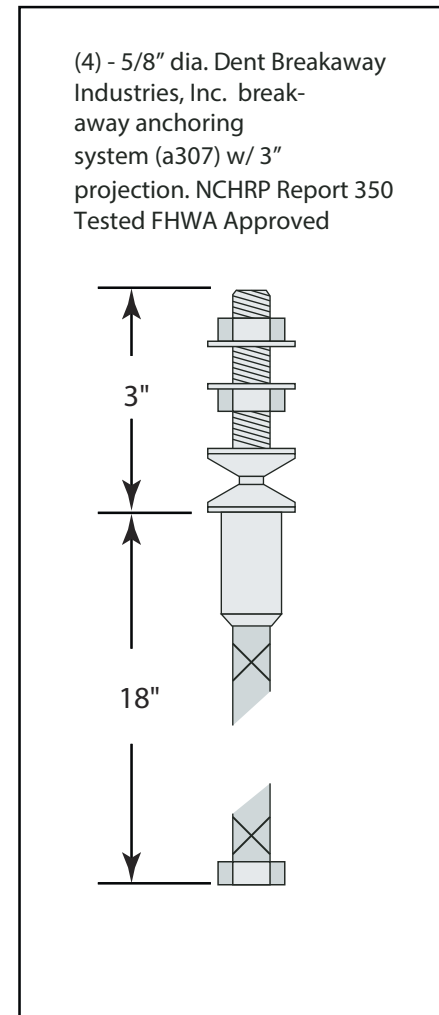
5" or 4" Square aluminum post, see Sign Types A, B, C and D
 1/2" Thick aluminum base plate
 1" Diameter hole (4 locations)

Note: 5" post shall pass through opening in base plate and shall be welded on top and bottom of plate. Grind bottom of plate of weld. Powder coat finish to match post

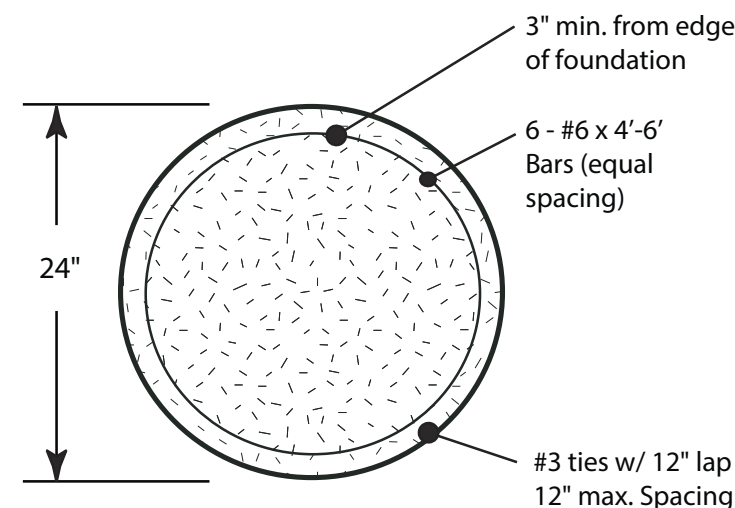
Base Plate Plan

NOTES

1. Top 12" of concrete foundation shall be formed with 24" diameter cardboard form.
2. Once cured, remove cardboard form.
3. Within concrete sidewalk, install 1/2" foam expansion joint and caulk.
4. Concrete shall be 4,000 PSI.
5. Light broom finish top of foundation.



Foundation Elevation



Foundation Plan

SIGN FOUNDATION DETAIL

Design Team:



30% Design Document Package
La Porte Wayfinding Signage
 LaPorte, Indiana

Sheet Title:

Sign Foundation Details

Date: November 1, 2017

Drawn By: NGD

Scale: NTS

Project: 2017-0078

Sheet
12

**NW Quadrant
See Sheet 14**

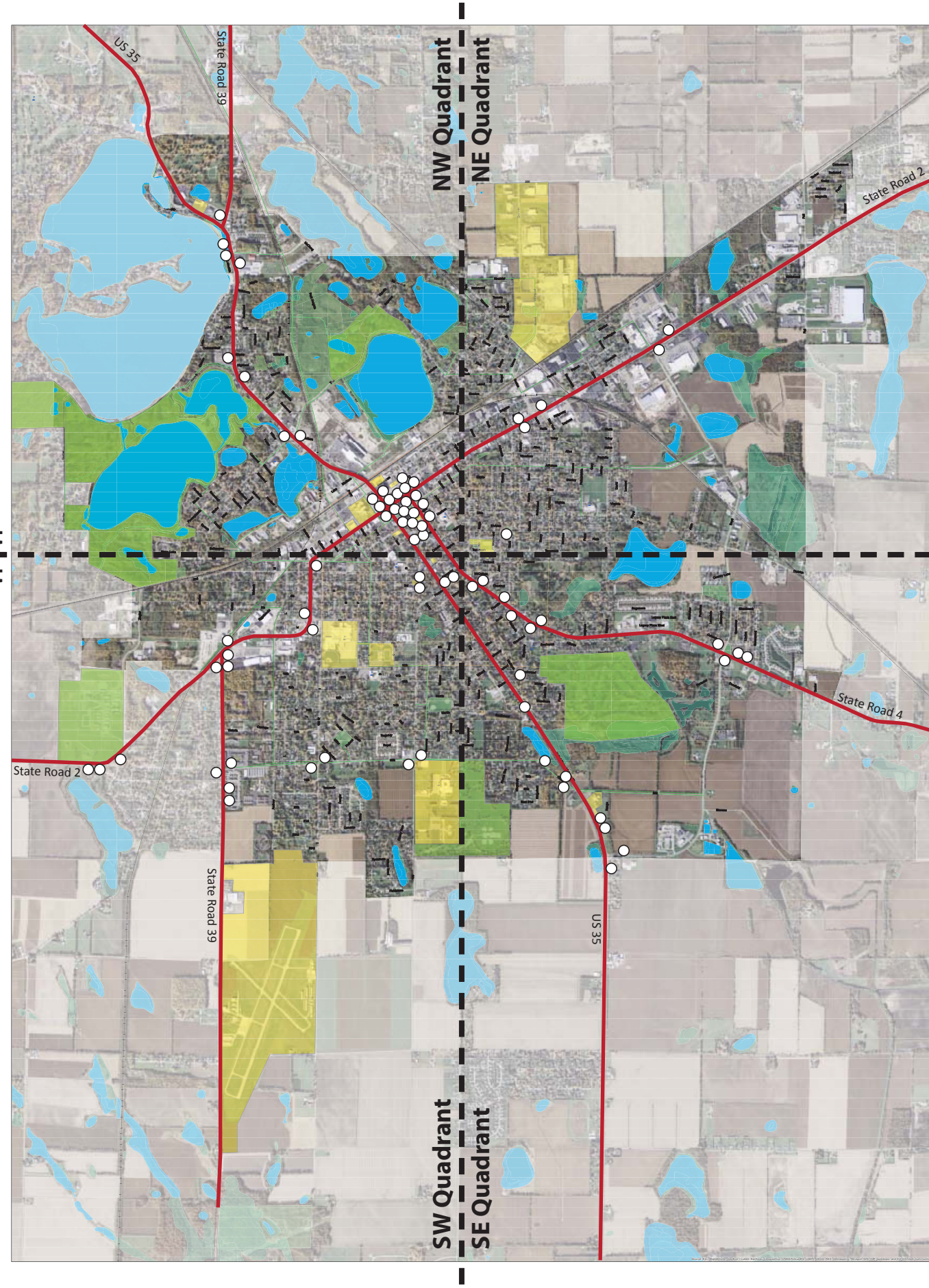
**SW Quadrant
See Sheet 34**

**NE Quadrant
See Sheet 30**

**SE Quadrant
See Sheet 46**

**NW Quadrant
SW Quadrant**

**NE Quadrant
SE Quadrant**



Design Team:



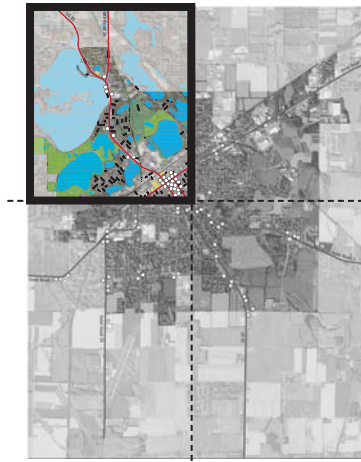
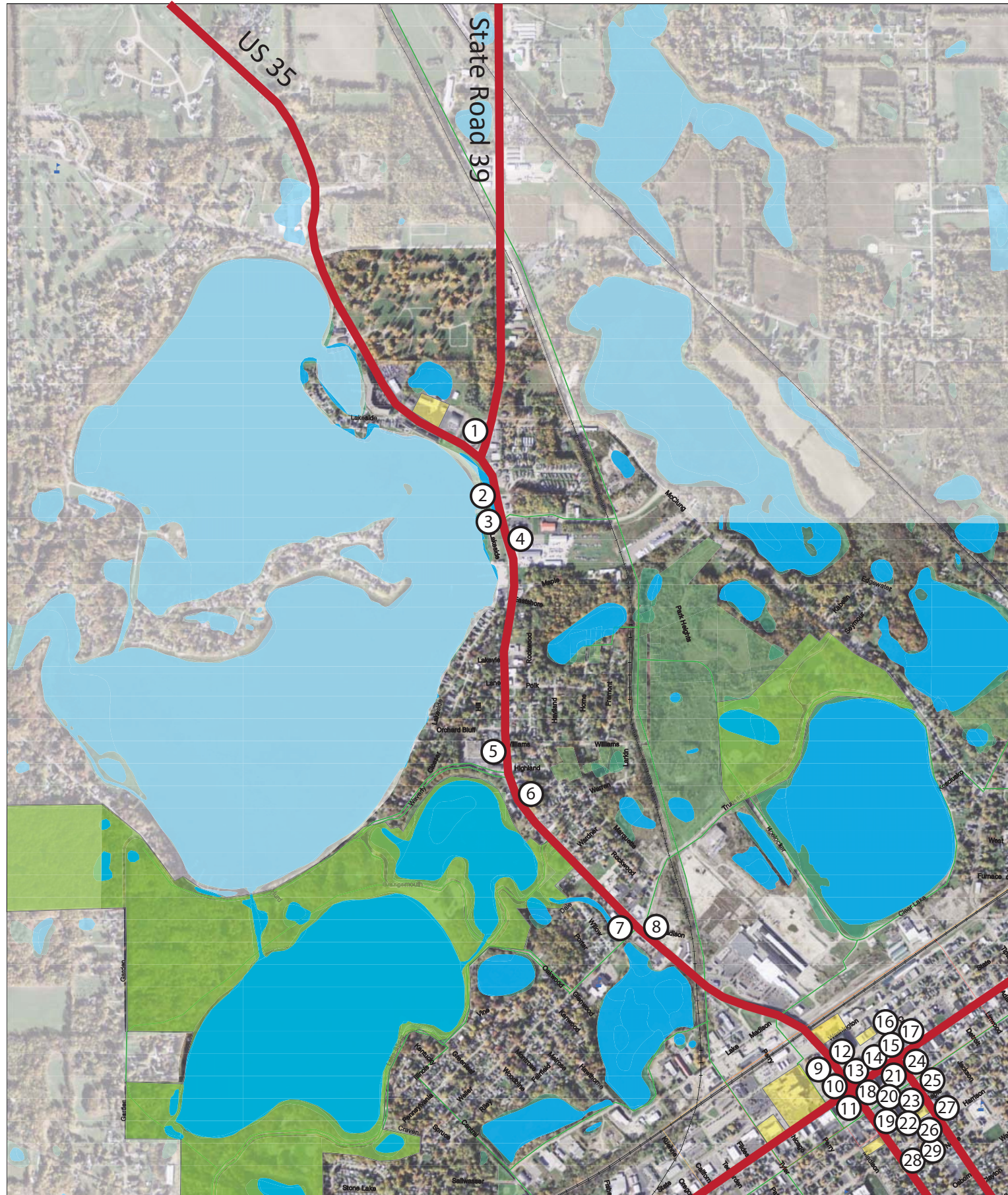
30% Design Document Package
La Porte Wayfinding Signage
LaPorte, Indiana

Sheet Title:
Quadrant Key Map for Sign Locations

Date: November 1, 2017
Drawn By: NGD
Scale: NTS
Project: 2017-0078



Sheet
13



NW Quadrant

Design Team:



30% Design Document Package

La Porte Wayfinding Signage

LaPorte, Indiana

Sheet Title:
Sign Location Key Map for
NW Quadrant

Date: November 1, 2017

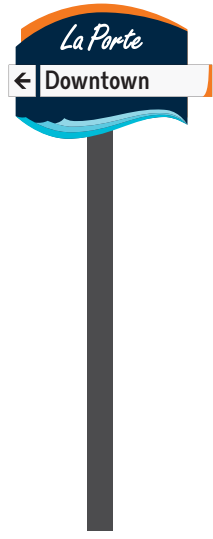
Drawn By: NGD

Scale: NTS

Project: 2017-0078



Sheet
14



Sign 1

Sign 1 Information

Sign Type: D
 Detail Sheet: Sheet 8
 Right-of-Way: INDOT (State Road 39)
 Location: Locate sign north of access drive.



Location Map
(Scale 1"=100')

Design Team:



30% Design Document Package
La Porte Wayfinding Signage
 LaPorte, Indiana

Sheet Title:

Signs 1 and 2

Date: November 1, 2017

Drawn By: NGD

Scale: Per Location Map

Project: 2017-0078



Sheet
15



Sign 2

Sign 2 Information

Sign Type: A
 Detail Sheet: Sheet 5
 Right-of-Way: INDOT (US 35/Pine Lake Avenue)
 Location: Locate sign on southwest side of Pine Lake Avenue in open lawn area.



Location Map
(Scale 1"=100')



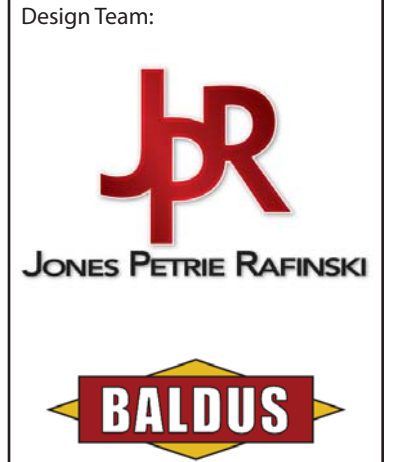
Sign 3

Sign 3 Information

Sign Type: A
 Detail Sheet: Sheet 5
 Right-of-Way: INDOT (US 35/Pine Lake Avenue)
 Location: Locate sign on west side of Pine Lake Avenue north of the access drive to Kiwanis-Teledyne Park and south of the existing City of La Porte sign.

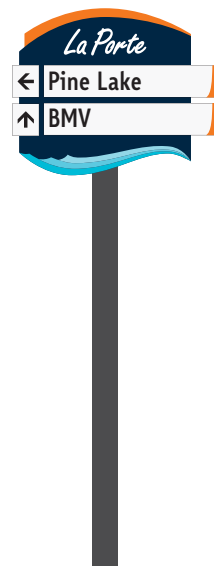


Location Map
(Scale 1"=100')



30% Design Document Package
La Porte Wayfinding Signage
 LaPorte, Indiana

Sheet Title:
Signs 3 and 4
 Date: November 1, 2017
 Drawn By: NGD
 Scale: Per Location Map
 Project: 2017-0078



Sign 4

Sign 4 Information

Sign Type: E
 Detail Sheet: Sheet 9
 Right-of-Way: INDOT (US 35/Pine Lake Avenue)
 Location: Locate sign on east side of Pine Lake Avenue within INDOT's right-of-way near the property line of Holiday Inn Express and El Bracero.



Location Map
(Scale 1"=100')



Sign 5

Sign 5 Information

Sign Type: A
 Detail Sheet: Sheet 5
 Right-of-Way: INDOT (US 35/Pine Lake Avenue)
 Location: Locate sign on west side of Pine Lake Avenue within the lawn panel of the Best Western Plus Hotel property. Sign to be located south of the fire hydrant and north of the utility pole.



Location Map
 (Scale 1"=100')



Sign 6

Sign 6 Information

Sign Type: A
 Detail Sheet: Sheet 5
 Right-of-Way: INDOT (US 35/Pine Lake Avenue)
 Location: Locate sign on northeast side of Pine Lake Avenue. Sign to be located between intersection of Pine Lake Avenue/Warren Street and the first utility pole to the north.



Location Map
 (Scale 1"=100')

Design Team:



30% Design Document Package
La Porte Wayfinding Signage
 LaPorte, Indiana

Sheet Title:

Signs 5 and 6

Date: November 1, 2017

Drawn By: NGD

Scale: Per Location Map

Project: 2017-0078



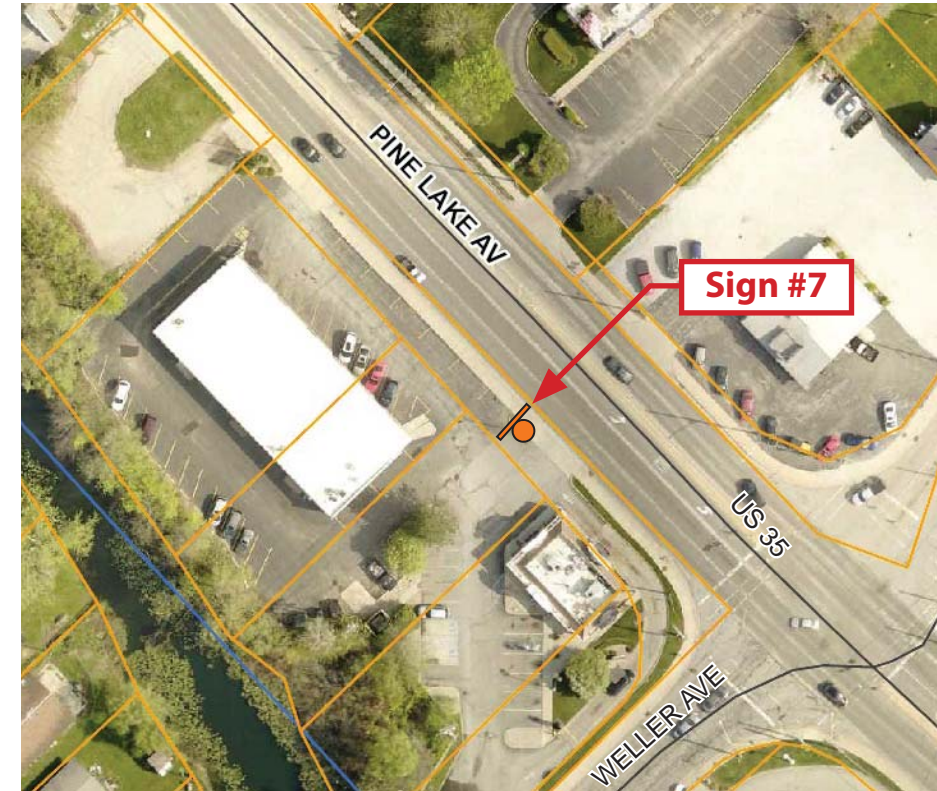
Sheet
17



Sign 7

Sign 7 Information

Sign Type: A
 Detail Sheet: Sheet 5
 Right-of-Way: INDOT (US 35/Pine Lake Avenue)
 Location: Locate sign within small curbed lawn island just north of the access drive to Taco Bell and shopping center to the north.



Location Map
(Scale 1"=100')

Design Team:



30% Design Document Package
La Porte Wayfinding Signage
 LaPorte, Indiana

Sheet Title:

Signs 7 and 8

Date: November 1, 2017

Drawn By: NGD

Scale: Per Location Map

Project: 2017-0078



Sheet
18



Sign 8

Sign 8 Information

Sign Type: A
 Detail Sheet: Sheet 5
 Right-of-Way: INDOT (US 35/Pine Lake Avenue)
 Location: Locate sign within lawn panel between roadway and sidewalk south of Pine Lake Avenue/Truesdell Avenue intersection.



Location Map
(Scale 1"=100')



Sign 9

Sign 9 Information

Sign Type: A
 Detail Sheet: Sheet 5
 Right-of-Way: INDOT (US 35/Indiana Avenue)
 Location: Locate sign just north of the second raised brick planter to the north of the Indiana Avenue and Lincolnway intersection.



Location Map
(Scale 1"=50')



Sign 10

Sign 10 Information

Sign Type: A
 Detail Sheet: Sheet 5
 Right-of-Way: INDOT (US 35/Indiana Avenue)
 Location: Locate sign just north of the first raised brick planter to the north of the Indiana Avenue and Lincolnway intersection.



Location Map
(Scale 1"=50')

Design Team:



30% Design Document Package
La Porte Wayfinding Signage
 LaPorte, Indiana

Sheet Title:

Signs 9 and 10

Date: November 1, 2017
 Drawn By: NGD
 Scale: Per Location Map
 Project: 2017-0078



Sheet
19



Sign 11

Sign 11 Information

Sign Type: B
 Detail Sheet: Sheet 6
 Right-of-Way: INDOT (Lincolnway/State Road 2)
 Location: Locate sign within sidewalk between first light pole and first tree east of the intersection of Lincolnway and Madison Street.



Location Map
(Scale 1"=50')



Sign 12

Sign 12 Information

Sign Type: A
 Detail Sheet: Sheet 5
 Right-of-Way: INDOT (US 35/Indiana Avenue)
 Location: Locate sign within sidewalk north of intersection of Indiana Avenue and Lincolnway between traffic signal pole and existing speed limit sign.



Location Map
(Scale 1"=50')

Design Team:

JONES PETRIE RAFINSKI

BALDUS

30% Design Document Package
La Porte Wayfinding Signage
 LaPorte, Indiana

Sheet Title:
Signs 11 and 12

Date: November 1, 2017
 Drawn By: NGD
 Scale: Per Location Map
 Project: 2017-0078



Sign 13

Sign 13 Information

Sign Type: A
 Detail Sheet: Sheet 5
 Right-of-Way: INDOT (State Road 2/Lincolnway)
 Location: Locate sign in the sidewalk along Lincolnway. Sign to be located east of tree on southwest corner of where Courthouse sidewalk converges with Lincolnway sidewalk.



Location Map
(Scale 1"=50')



Sign 14

Sign 14 Information

Sign Type: A
 Detail Sheet: Sheet 5
 Right-of-Way: INDOT (State Road 2/Lincolnway)
 Location: Locate sign in the sidewalk where trash receptacle is currently located. Move trash receptacle to the east.



Location Map
(Scale 1"=50')

Design Team:



30% Design Document Package
La Porte Wayfinding Signage
 LaPorte, Indiana

Sheet Title:

Signs 13 and 14

Date: November 1, 2017

Drawn By: NGD

Scale: Per Location Map

Project: 2017-0078



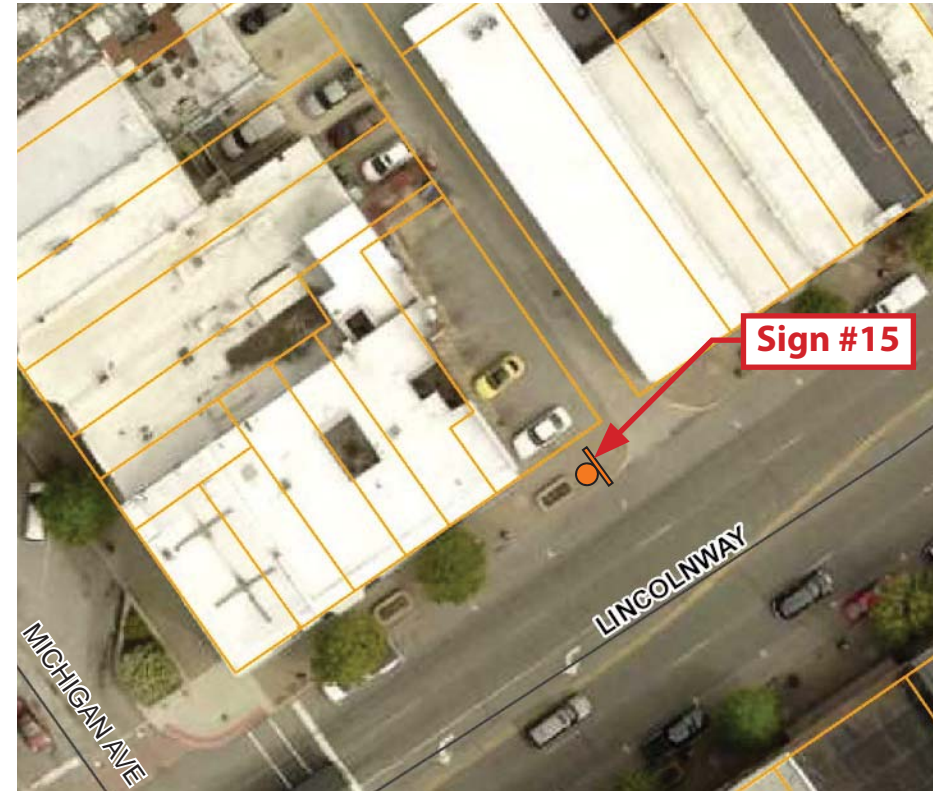
Sheet
21



Sign 15

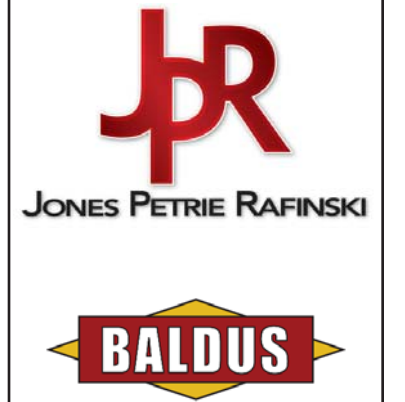
Sign 15 Information

Sign Type: B
 Detail Sheet: Sheet 6
 Right-of-Way: INDOT (Lincolnway/State Road 2)
 Location: Locate sign within sidewalk between alley and raised brick planter.



Location Map
(Scale 1"=50')

Design Team:



30% Design Document Package
La Porte Wayfinding Signage
 LaPorte, Indiana

Sheet Title:

Signs 15 and 16

Date: November 1, 2017

Drawn By: NGD

Scale: Per Location Map

Project: 2017-0078



Sheet
22



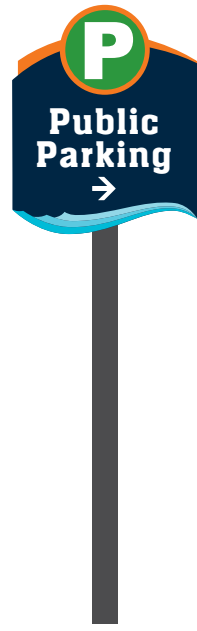
Sign 16

Sign 16 Information

Sign Type: F
 Detail Sheet: Sheet 10
 Right-of-Way: City of La Porte (Monroe Street)
 Location: Locate double sided trailblazer sign on existing light post on the south side of the entrance of parking lot.



Location Map
(Scale 1"=50')



Sign 17

Sign 17 Information

Sign Type: F
 Detail Sheet: Sheet 10
 Right-of-Way: INDOT (State Road 2/Lincolnway)
 Location: Locate sign on second light post to the east from the intersection of Lincolnway and Monroe Street.



Location Map
(Scale 1"=50')



Sign 18

Sign 18 Information

Sign Type: A
 Detail Sheet: Sheet 5
 Right-of-Way: INDOT (US 35/Indiana Avenue)
 Location: Locate sign in the sidewalk between raised brick planter and tree.



Location Map
(Scale 1"=50')

Design Team:



30% Design Document Package
La Porte Wayfinding Signage
 LaPorte, Indiana

Sheet Title:

Signs 17 and 18

Date: November 1, 2017

Drawn By: NGD

Scale: Per Location Map

Project: 2017-0078



Sheet
23



Sign 19

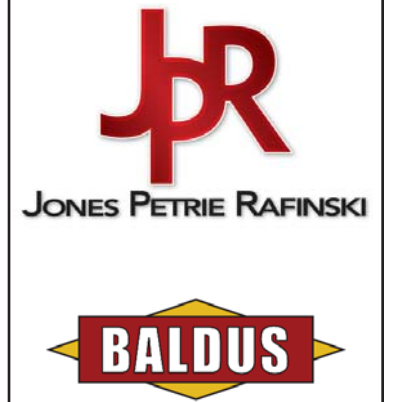
Sign 19 Information

Sign Type: A
 Detail Sheet: Sheet 5
 Right-of-Way: INDOT (US 35/Indiana Avenue)
 Location: Locate sign within sidewalk between light post and tree.



Location Map
(Scale 1"=50')

Design Team:



30% Design Document Package
La Porte Wayfinding Signage
 LaPorte, Indiana

Sheet Title:

Signs 19 and 20

Date: November 1, 2017
 Drawn By: NGD
 Scale: Per Location Map
 Project: 2017-0078



Sheet
24



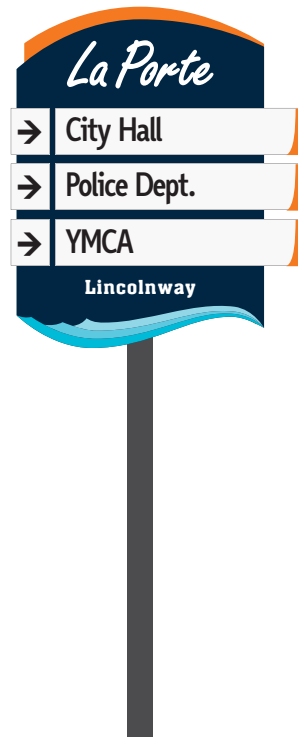
Sign 20

Sign 20 Information

Sign Type: A
 Detail Sheet: Sheet 5
 Right-of-Way: INDOT (State Road 2/Lincolnway)
 Location: Locate sign within sidewalk to the west of the light post and to the east of the tree.



Location Map
(Scale 1"=50')



Sign 21

Sign 21 Information

Sign Type: A
 Detail Sheet: Sheet 5
 Right-of-Way: INDOT (State Road 2/Lincolnway)
 Location: Locate sign in sidewalk to west of tree and east of light pole.



Location Map
(Scale 1"=50')

Design Team:



30% Design Document Package
La Porte Wayfinding Signage
 LaPorte, Indiana

Sheet Title:

Signs 21 and 22

Date: November 1, 2017

Drawn By: NGD

Scale: Per Location Map

Project: 2017-0078



Sheet
25



Sign 22

Sign 22 Information

Sign Type: D
 Detail Sheet: Sheet 8
 Right-of-Way: INDOT (State Road 2/Lincolnway)
 Location: Remove existing sign and provide to City of La Porte. Locate new trailblazer sign on third light pole west of the intersection of State Road 2 and Monroe Street.



Location Map
(Scale 1"=50')



Sign 23

Sign 23 Information

Sign Type: F
 Detail Sheet: Sheet 10
 Right-of-Way: INDOT (State Road 2/Lincolnway)
 Location: Locate trailblazer sign on second light pole west of the intersection of State Road 2 and Monroe Street.



Location Map
(Scale 1"=50')

Design Team:



30% Design Document Package
La Porte Wayfinding Signage
 LaPorte, Indiana

Sheet Title:

Signs 23 and 24

Date: November 1, 2017

Drawn By: NGD

Scale: Per Location Map

Project: 2017-0078



Sheet
26



Sign 24

Sign 24 Information

Sign Type: A
 Detail Sheet: Sheet 5
 Right-of-Way: INDOT (State Road 4/Monroe Street)
 Location: Locate sign within sidewalk between alley and tree.



Location Map
(Scale 1"=50')



Sign 25

Sign 25 Information

Sign Type: A
 Detail Sheet: Sheet 5
 Right-of-Way: INDOT (State Road 4/Monroe Street)
 Location: Locate sign in sidewalk to north of raised brick planter and south of tree.



Location Map
(Scale 1"=50')

Design Team:

JONES PETRIE RAFINSKI
BALDUS

30% Design Document Package
La Porte Wayfinding Signage
 LaPorte, Indiana

Sheet Title:
Signs 25 and 26

Date: November 1, 2017
 Drawn By: NGD
 Scale: Per Location Map
 Project: 2017-0078



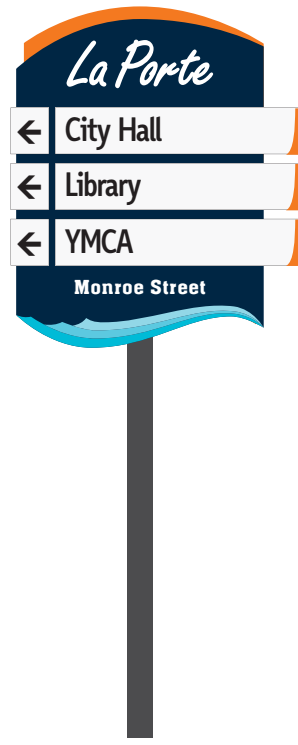
Sign 26

Sign 26 Information

Sign Type: A
 Detail Sheet: Sheet 5
 Right-of-Way: City of La Porte (Maple Avenue)
 Location: Locate sign within the raised brick planter (on the northeast end).



Location Map
(Scale 1"=50')



Sign 27

Sign 27 Information

Sign Type: A
 Detail Sheet: Sheet 5
 Right-of-Way: INDOT (State Road 4/Monroe Street)
 Location: Locate sign in landscape island just north of access drive to First Christian Church.



Location Map
(Scale 1"=50')

Design Team:



30% Design Document Package
La Porte Wayfinding Signage
 LaPorte, Indiana

Sheet Title:

Signs 27 and 28

Date: November 1, 2017

Drawn By: NGD

Scale: Per Location Map

Project: 2017-0078



Sheet
28



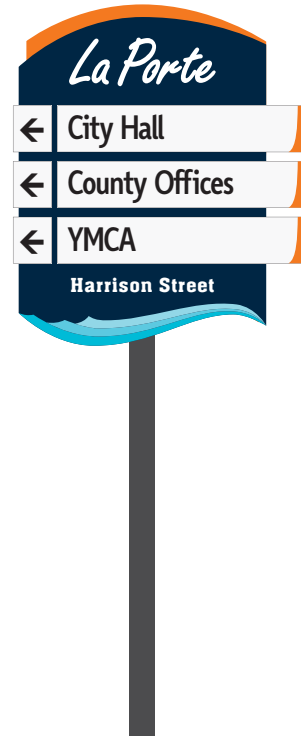
Sign 28

Sign 28 Information

Sign Type: A
 Detail Sheet: Sheet 5
 Right-of-Way: INDOT (US 35/Indiana Avenue)
 Location: Locate sign in lawn panel between street and sidewalk. Locate sign between two trees between alley and Harrison Street.



Location Map
(Scale 1"=50')



Sign 29

Sign 29 Information

Sign Type: A
 Detail Sheet: Sheet 5
 Right-of-Way: City of La Porte (Harrison Street)
 Location: Locate sign in lawn panel between sidewalk and street.



Location Map
 (Scale 1"=50')

Design Team:



30% Design Document Package
La Porte Wayfinding Signage
 LaPorte, Indiana

Sheet Title:

Sign 29

Date: November 1, 2017

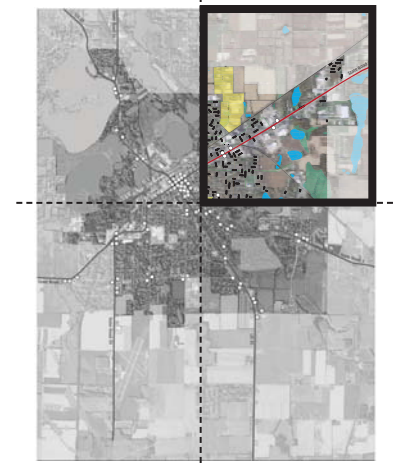
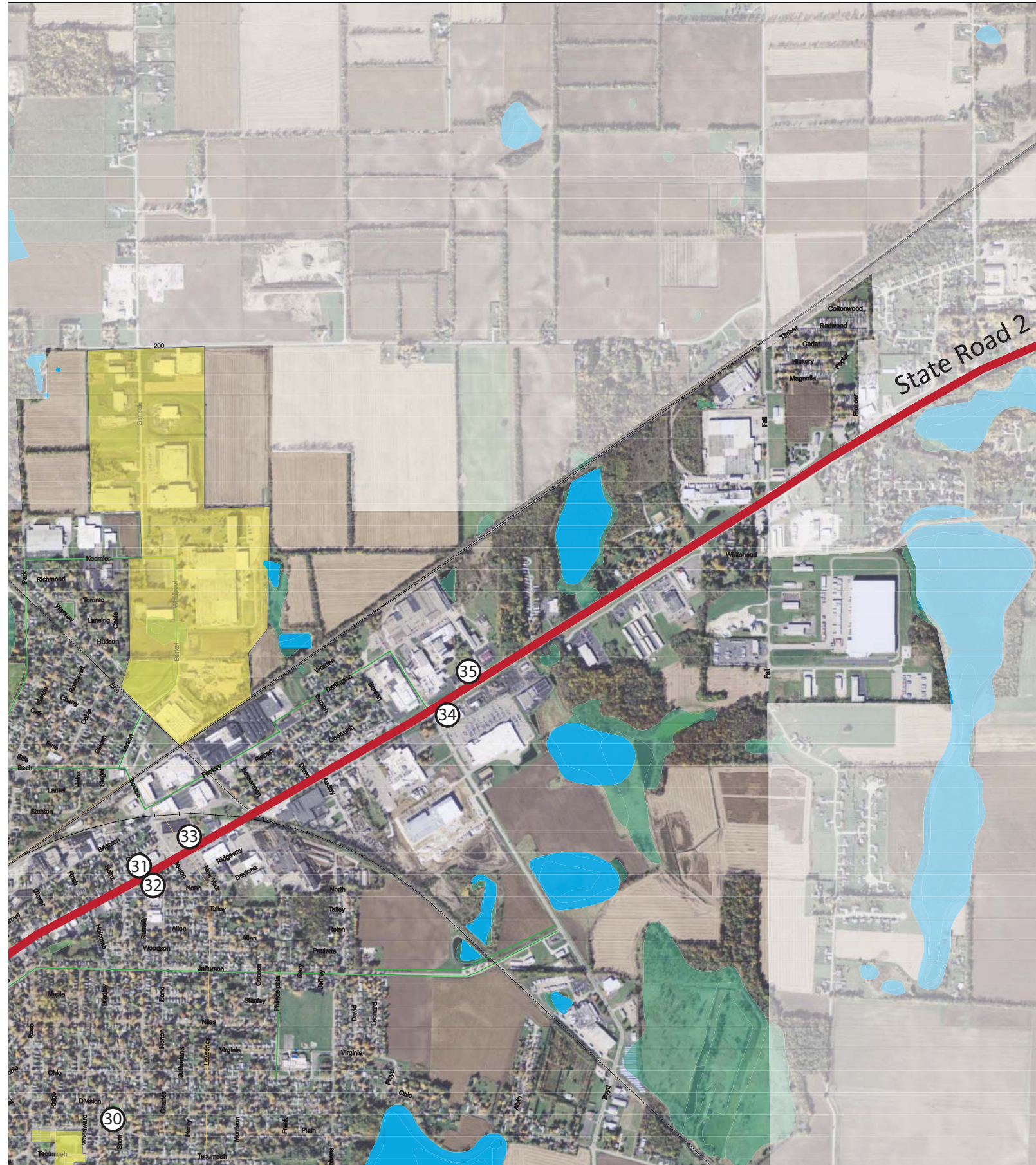
Drawn By: NGD

Scale: Per Location Map

Project: 2017-0078



Sheet
29



NE Quadrant

Design Team:



30% Design Document Package

La Porte Wayfinding Signage

LaPorte, Indiana

Sheet Title:
Sign Location Key Map for
NE Quadrant

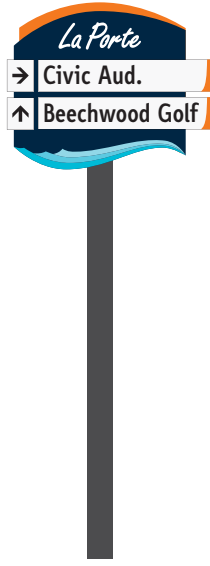
Date:	November 1, 2017
Drawn By:	NGD
Scale:	NTS
Project:	2017-0078



Sheet
30

Sign 30 Information

Sign Type: E
 Detail Sheet: Sheet 9
 Right-of-Way: City of La Porte (Scott Street)
 Location: Locate sign in lawn panel on west side of Scott Street north of the stop sign and south of the existing tree.



Sign 30



Location Map
 (Scale 1"=50')

Design Team:



Sign 31 Information

Sign Type: B
 Detail Sheet: Sheet 6
 Right-of-Way: INDOT (State Road 2/Lincolnway)
 Location: Locate sign in lawn panel between street and sidewalk. Locate sign on axis line of the residential property lines.



Sign 31



Location Map
 (Scale 1"=50')

30% Design Document Package
La Porte Wayfinding Signage
 LaPorte, Indiana

Sheet Title:

Signs 30 and 31

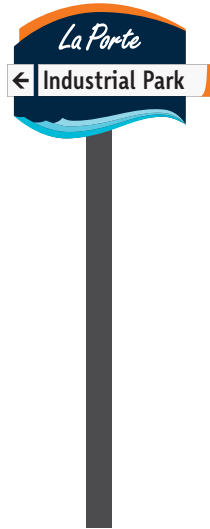
Date: November 1, 2017
 Drawn By: NGD
 Scale: Per Location Map
 Project: 2017-0078



Sheet
31

Sign 32 Information

Sign Type: D
 Detail Sheet: Sheet 8
 Right-of-Way: INDOT (State Road 2/Lincolnway)
 Location: Locate sign in lawn panel between street and sidewalk. Sign to be located on axis with residential property lines.



Sign 32



Location Map
 (Scale 1"=50')

Sign 33 Information

Sign Type: A
 Detail Sheet: Sheet 5
 Right-of-Way: INDOT (State Road 2/Lincolnway)
 Location: Locate sign in lawn panel between street and sidewalk in front of Family Dollar.



Sign 33



Location Map
 (Scale 1"=100')

Design Team:



30% Design Document Package
La Porte Wayfinding Signage
 LaPorte, Indiana

Sheet Title:

Signs 32 and 33

Date: November 1, 2017

Drawn By: NGD

Scale: Per Location Map

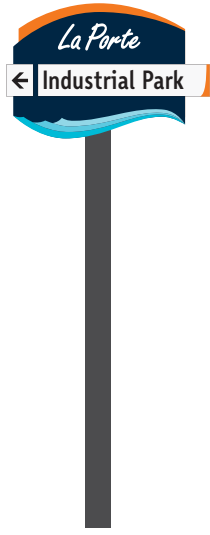
Project: 2017-0078



Sheet
32

Sign 34 Information

Sign Type: D
 Detail Sheet: Sheet 8
 Right-of-Way: City of La Porte (Boyd Boulevard)
 Location: Locate sign in lawn panel on east side of Boyd Boulevard between the two access drives.



Sign 34



Location Map
 (Scale 1"=100')

Design Team:



30% Design Document Package
La Porte Wayfinding Signage
 LaPorte, Indiana

Sheet Title:

Signs 34 and 35

Date: November 1, 2017

Drawn By: NGD

Scale: Per Location Map

Project: 2017-0078



Sheet
33

Sign 35 Information

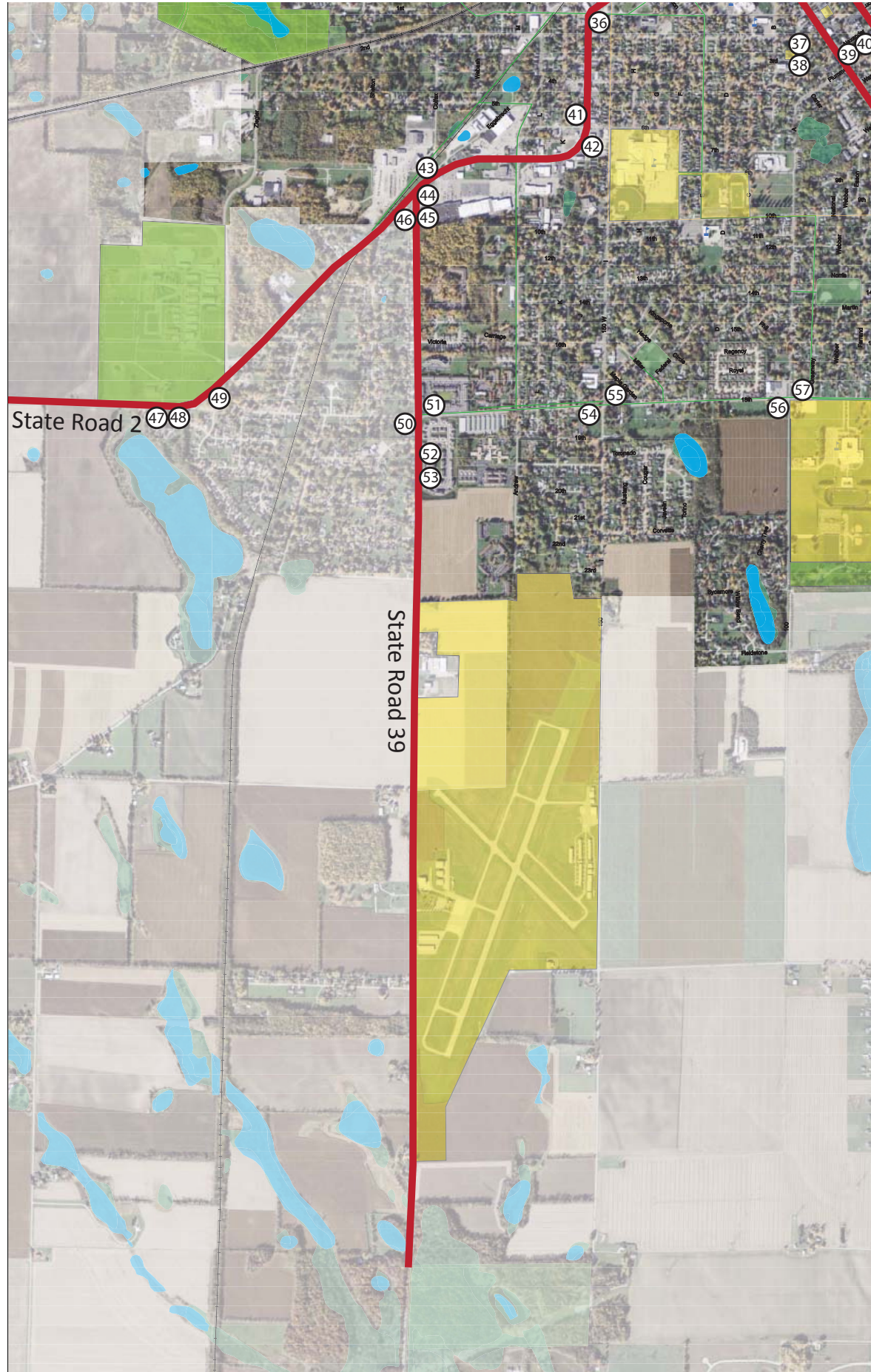
Sign Type: B
 Detail Sheet: Sheet 6
 Right-of-Way: INDOT (State Road 2/Lincolnway)
 Location: Locate sign in lawn panel between street and parking lot. Locate sign between access drives.



Sign 35



Location Map
 (Scale 1"=100')



SW Quadrant

Design Team:



30% Design Document Package

La Porte Wayfinding Signage

LaPorte, Indiana

Sheet Title:
Sign Location Key Map for
SW Quadrant

Date: November 1, 2017
 Drawn By: NGD
 Scale: NTS
 Project: 2017-0078



Sheet
34



Sign 36

Sign 36 Information

Sign Type: A
 Detail Sheet: Sheet 5
 Right-of-Way: INDOT (J Street/Lincolnway/State Road 2)
 Location: Locate sign in lawn panel between street and sidewalk.



Location Map
(Scale 1"=50')

Design Team:



30% Design Document Package
La Porte Wayfinding Signage
 LaPorte, Indiana

Sheet Title:

Signs 36 and 37

Date: November 1, 2017

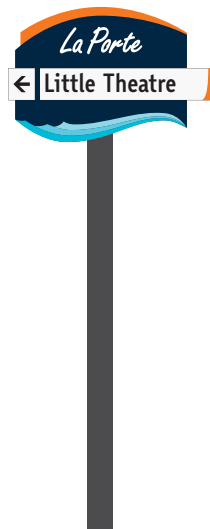
Drawn By: NGD

Scale: Per Location Map

Project: 2017-0078



Sheet
35



Sign 37

Sign 37 Information

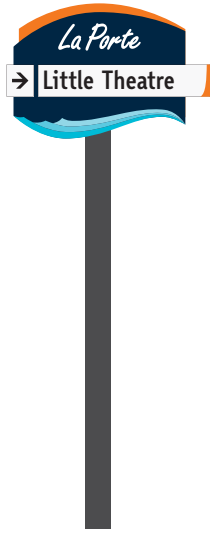
Sign Type: D
 Detail Sheet: Sheet 8
 Right-of-Way: City of La Porte (A Street)
 Location: Locate trailblazer sign on wooden pole just past intersection of 3rd and A Streets.



Location Map
(Scale 1"=50')

Sign 38 Information

Sign Type: D
 Detail Sheet: Sheet 8
 Right-of-Way: City of La Porte (A Street)
 Location: Locate trailblazer sign on existing wooden pole.



Sign 38



Location Map
(Scale 1"=50')

Sign 39 Information

Sign Type: A
 Detail Sheet: Sheet 5
 Right-of-Way: INDOT (US 35/Indiana Avenue)
 Location: Locate sign in lawn panel between street and sidewalk.



Sign 39



Location Map
(Scale 1"=50')

Design Team:



30% Design Document Package
La Porte Wayfinding Signage
 LaPorte, Indiana

Sheet Title:

Signs 38 and 39

Date: November 1, 2017

Drawn By: NGD

Scale: Per Location Map

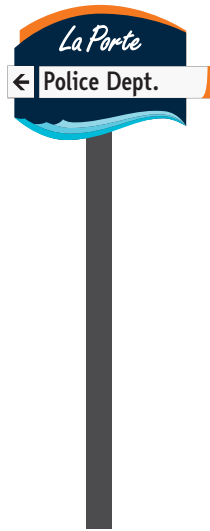
Project: 2017-0078



Sheet
36

Sign 40 Information

Sign Type: D
 Detail Sheet: Sheet 8
 Right-of-Way: City of La Porte (Alexander Street)
 Location: Locate sign in lawn panel between street and sidewalk. Sign to be located northeast of existing tree and southwest of stop sign.



Sign 40



Location Map
(Scale 1"=50')

Sign 41 Information

Sign Type: A
 Detail Sheet: Sheet 5
 Right-of-Way: INDOT (J Street/Lincolnway/State Road 2)
 Location: Locate sign in lawn panel between street and sidewalk north of drive access.



Sign 41



Location Map
(Scale 1"=50')

Design Team:



30% Design Document Package
La Porte Wayfinding Signage
 LaPorte, Indiana

Sheet Title:

Signs 40 and 41

Date: November 1, 2017

Drawn By: NGD

Scale: Per Location Map

Project: 2017-0078



Sheet

37



Sign 42

Sign 42 Information

Sign Type: A
 Detail Sheet: Sheet 5
 Right-of-Way: INDOT (J Street/Lincolnway/State Road 2)
 Location: Locate sign within lawn area on north side of parking lot of Meridian Title Company.



Location Map
(Scale 1"=100')

Design Team:



30% Design Document Package
La Porte Wayfinding Signage
 LaPorte, Indiana

Sheet Title:

Signs 42 and 43

Date: November 1, 2017

Drawn By: NGD

Scale: Per Location Map

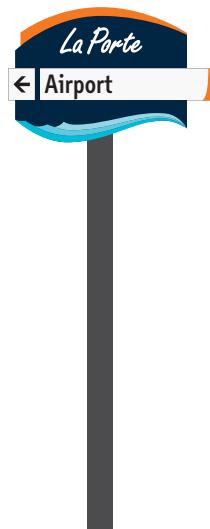
Project: 2017-0078



Sheet
38

Sign 43 Information

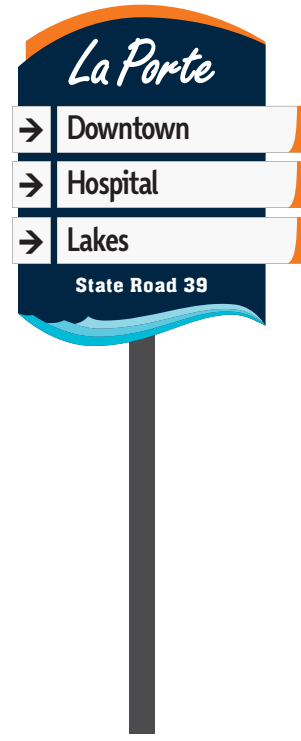
Sign Type: D
 Detail Sheet: Sheet 8
 Right-of-Way: INDOT (State Road 2)
 Location: Locate sign in lawn area on north side of State Road 2. Sign to be located northeast of INDOT attractions sign and southwest of historic sign.



Sign 43



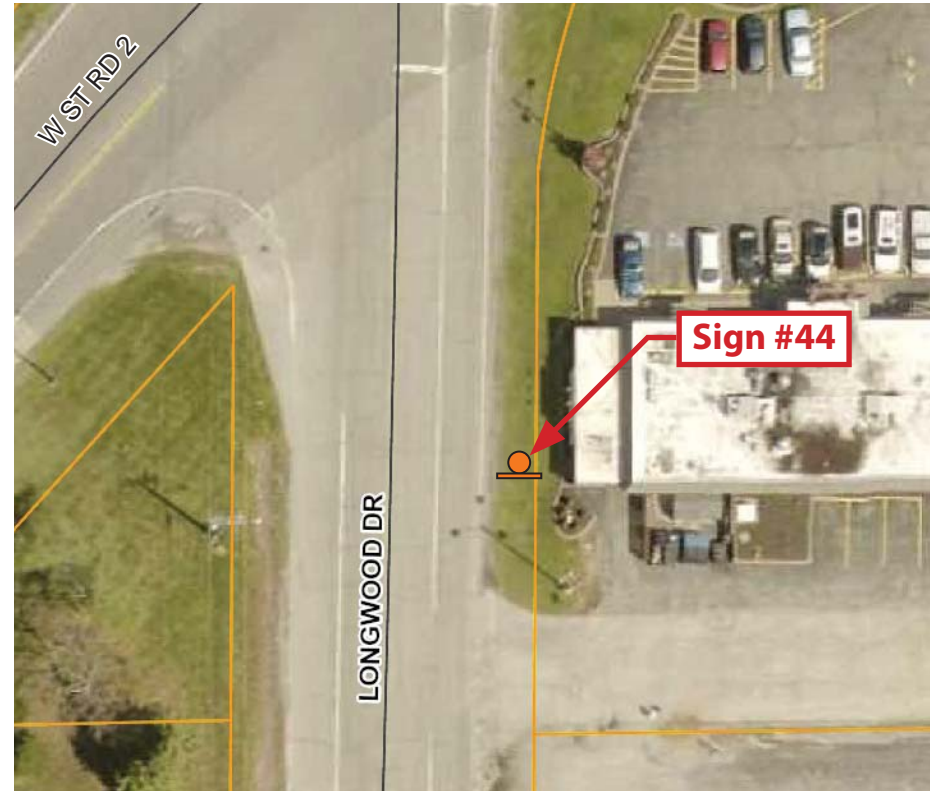
Location Map
(Scale 1"=100')



Sign 44

Sign 44 Information

Sign Type: A
 Detail Sheet: Sheet 5
 Right-of-Way: INDOT (State Road 39)
 Location: Locate sign in lawn panel between street and building.



Location Map
(Scale 1"=50')



Sign 45

Sign 45 Information

Sign Type: A
 Detail Sheet: Sheet 5
 Right-of-Way: INDOT (State Road 39)
 Location: Locate sign in lawn panel between street and building.



Location Map
(Scale 1"=100')

Design Team:



30% Design Document Package
La Porte Wayfinding Signage
 LaPorte, Indiana

Sheet Title:

Signs 44 and 45

Date: November 1, 2017

Drawn By: NGD

Scale: Per Location Map

Project: 2017-0078



Sheet
39



Sign 46

Sign 46 Information

Sign Type: A
 Detail Sheet: Sheet 5
 Right-of-Way: INDOT (State Road 2)
 Location: Locate sign within lawn area on southeast side of State Road 2.



Location Map
(Scale 1"=100')

Design Team:



30% Design Document Package
La Porte Wayfinding Signage
 LaPorte, Indiana

Sheet Title:

Signs 46 and 47

Date: November 1, 2017
 Drawn By: NGD
 Scale: Per Location Map
 Project: 2017-0078



Sheet
40



Sign 47

Sign 47 Information

Sign Type: A
 Detail Sheet: Sheet 5
 Right-of-Way: INDOT (State Road 2)
 Location: Locate sign in lawn area on east side of the existing speed limit sign.



Location Map
(Scale 1"=100')



Sign 48

Sign 48 Information

Sign Type: A
 Detail Sheet: Sheet 5
 Right-of-Way: INDOT (State Road 2)
 Location: Locate sign in lawn area on west side of drive access.



Location Map
(Scale 1"=100')

Design Team:



30% Design Document Package
La Porte Wayfinding Signage
 LaPorte, Indiana

Sheet Title:

Signs 48 and 49

Date: November 1, 2017

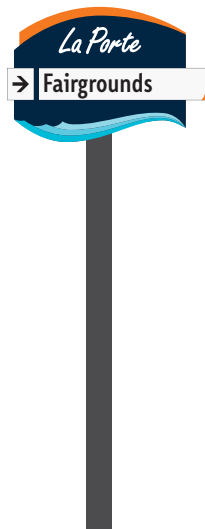
Drawn By: NGD

Scale: Per Location Map

Project: 2017-0078



Sheet
41



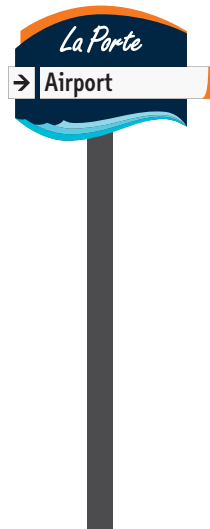
Sign 49

Sign 49 Information

Sign Type: D
 Detail Sheet: Sheet 8
 Right-of-Way: City of La Porte (County Highway 100 S/18th Street)
 Location: Locate sign in lawn area just east of the wooded area.



Location Map
(Scale 1"=50')



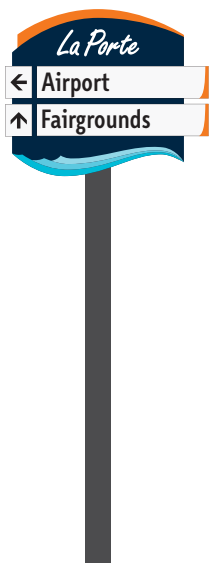
Sign 50

Sign 50 Information

Sign Type: D
 Detail Sheet: Sheet 8
 Right-of-Way: City of La Porte (18th Street)
 Location: Locate trailblazer sign to the west of the stop sign and east of the residential drive access.



Location Map
(Scale 1"=50')



Sign 51

Sign 51 Information

Sign Type: E
 Detail Sheet: Sheet 9
 Right-of-Way: City of La Porte (18th Street)
 Location: Locate sign in lawn panel between street and sidewalk.



Location Map
(Scale 1"=50')

Design Team:



30% Design Document Package
La Porte Wayfinding Signage
 LaPorte, Indiana

Sheet Title:

Signs 50 and 51

Date: November 1, 2017
 Drawn By: NGD
 Scale: Per Location Map
 Project: 2017-0078



Sheet
42



Sign 52

Sign 52 Information

Sign Type: A
 Detail Sheet: Sheet 5
 Right-of-Way: INDOT (State Road 39)
 Location: Locate sign in lawn area on east side of street. Sign to be located south of existing 18th Street intersection sign.



Location Map
(Scale 1"=100')

Design Team:



30% Design Document Package
La Porte Wayfinding Signage
 LaPorte, Indiana

Sheet Title:

Signs 52 and 53

Date: November 1, 2017

Drawn By: NGD

Scale: Per Location Map

Project: 2017-0078



Sheet
43



Sign 53

Sign 53 Information

Sign Type: A
 Detail Sheet: Sheet 5
 Right-of-Way: INDOT (State Road 39)
 Location: Locate sign in lawn area on east side of street.



Location Map
(Scale 1"=100')



Sign 54

Sign 54 Information

Sign Type: B
 Detail Sheet: Sheet 6
 Right-of-Way: City of La Porte (18th Street)
 Location: Locate sign to the west of the existing tree and east of the utility pole.



Location Map
(Scale 1"=50')



Sign 55

Sign 55 Information

Sign Type: A
 Detail Sheet: Sheet 5
 Right-of-Way: City of La Porte (18th Street)
 Location: Locate sign in lawn panel between street and sidewalk.



Location Map
(Scale 1"=50')

Design Team:



30% Design Document Package
La Porte Wayfinding Signage
 LaPorte, Indiana

Sheet Title:

Signs 54 and 55

Date: November 1, 2017
 Drawn By: NGD
 Scale: Per Location Map
 Project: 2017-0078



Sheet
44



Sign 56

Sign 56 Information

Sign Type: A
 Detail Sheet: Sheet 5
 Right-of-Way: City of La Porte (18th Street)
 Location: Locate sign in lawn area just south of existing stop sign.



Location Map
(Scale 1"=50')

Design Team:



30% Design Document Package
La Porte Wayfinding Signage
 LaPorte, Indiana

Sheet Title:

Signs 56 and 57

Date: November 1, 2017

Drawn By: NGD

Scale: Per Location Map

Project: 2017-0078



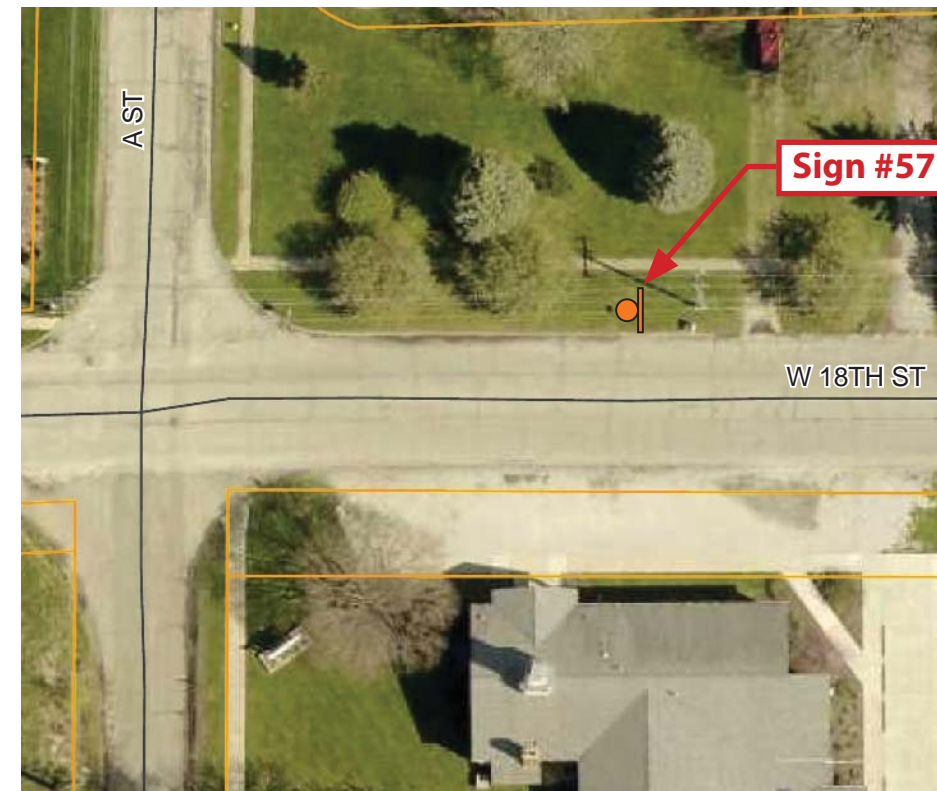
Sheet
45



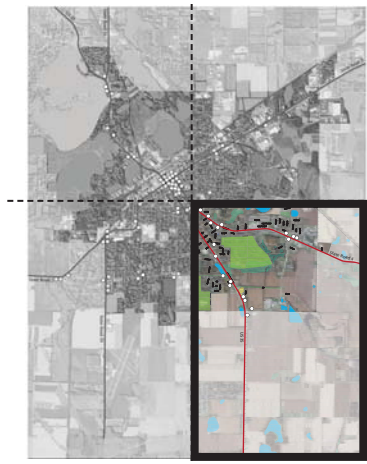
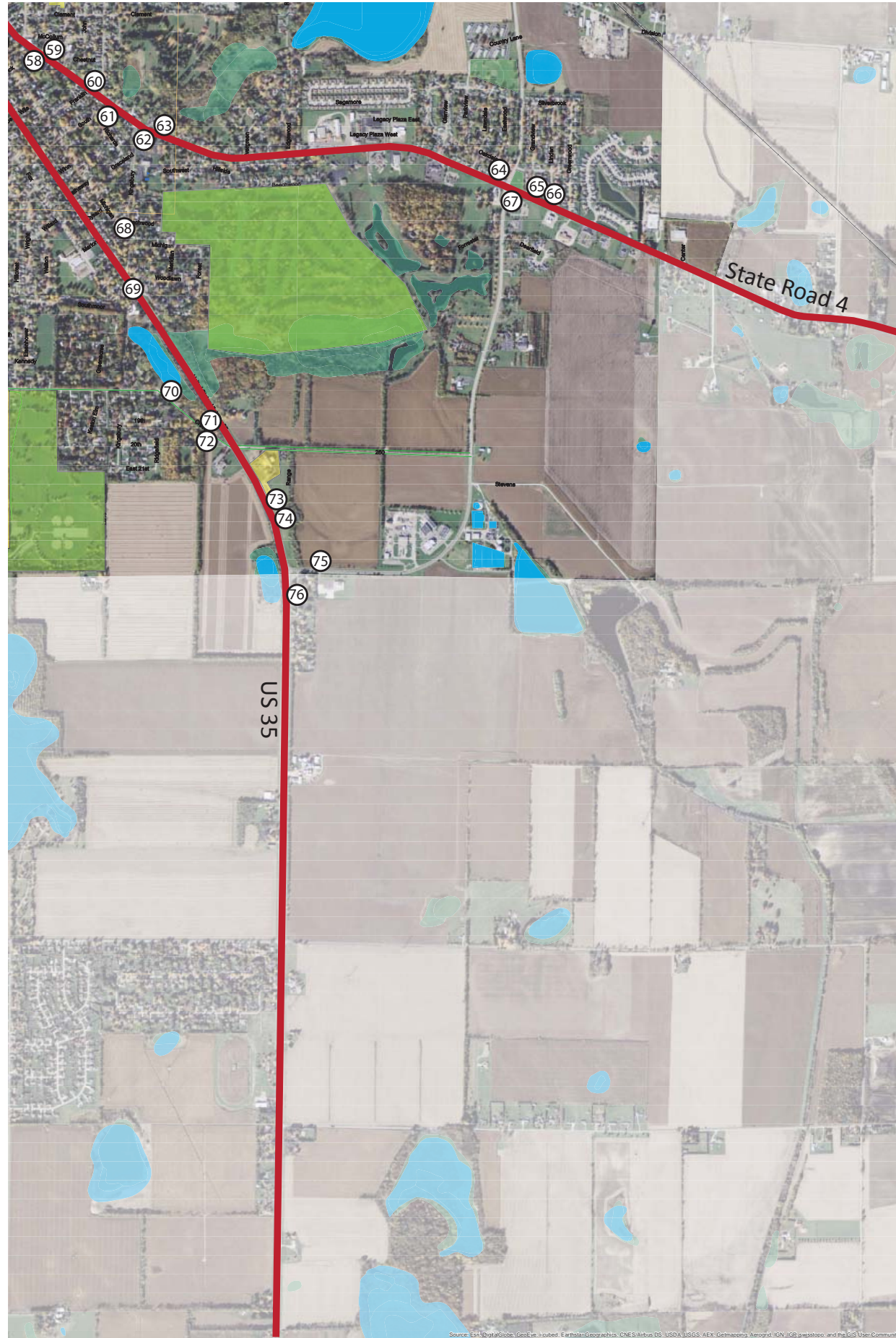
Sign 57

Sign 57 Information

Sign Type: A
 Detail Sheet: Sheet 5
 Right-of-Way: City of La Porte (18th Street)
 Location: Located sign in place of existing bike sign. Relocate bike sign further east.



Location Map
(Scale 1"=50')



SE Quadrant

Design Team:



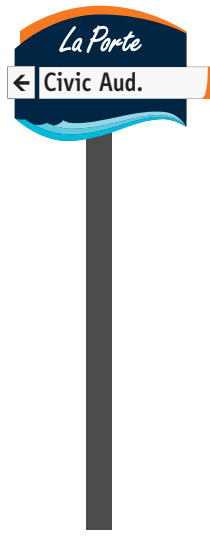
30% Design Document Package
La Porte Wayfinding Signage
 LaPorte, Indiana

Sheet Title:
 Sign Location Key Map for
 SE Quadrant

Date: November 1, 2017
 Drawn By: NGD
 Scale: NTS
 Project: 2017-0078



Sheet
46



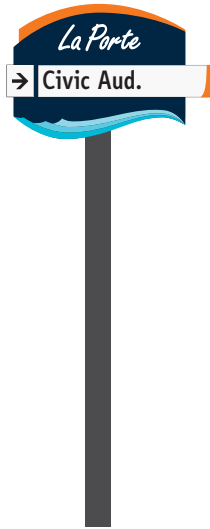
Sign 58

Sign 58 Information

Sign Type: D
 Detail Sheet: Sheet 8
 Right-of-Way: INDOT (State Road 4/Monroe Street)
 Location: Locate sign in lawn panel between street and sidewalk.



Location Map
(Scale 1"=50')



Sign 59

Sign 59 Information

Sign Type: D
 Detail Sheet: Sheet 8
 Right-of-Way: INDOT (State Road 4/Monroe Street)
 Location: Locate sign in lawn panel between street and sidewalk.



Location Map
(Scale 1"=50')

Design Team:



30% Design Document Package
La Porte Wayfinding Signage
 LaPorte, Indiana

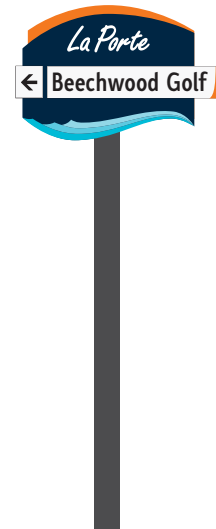
Sheet Title:

Signs 58 and 59

Date: November 1, 2017
 Drawn By: NGD
 Scale: Per Location Map
 Project: 2017-0078



Sheet
47



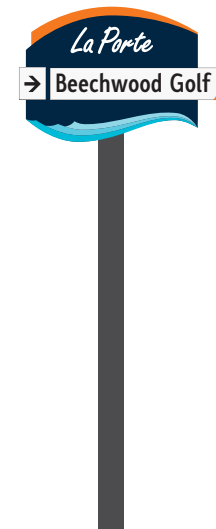
Sign 60

Sign 60 Information

Sign Type: D
 Detail Sheet: Sheet 8
 Right-of-Way: City of La Porte (Scott Street)
 Location: Locate sign in lawn panel between street and sidewalk.



Location Map
(Scale 1"=50')



Sign 61

Sign 61 Information

Sign Type: D
 Detail Sheet: Sheet 8
 Right-of-Way: INDOT (State Road 4/Monroe Street)
 Location: Locate sign in lawn panel between street and sidewalk on axis with residential property lines.



Location Map
(Scale 1"=100')

Design Team:



30% Design Document Package
La Porte Wayfinding Signage
 LaPorte, Indiana

Sheet Title:

Signs 60 and 61

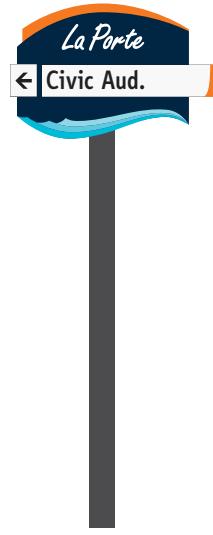
Date: November 1, 2017
 Drawn By: NGD
 Scale: Per Location Map
 Project: 2017-0078



Sheet
48

Sign 62 Information

Sign Type: D
 Detail Sheet: Sheet 8
 Right-of-Way: City of La Porte (Kingsbury Avenue)
 Location: Locate sign on existing wooden utility pole.



Sign 62



Location Map
 (Scale 1"=50')

Sign 63 Information

Sign Type: A
 Detail Sheet: Sheet 5
 Right-of-Way: INDOT (State Road 4/Monroe Street)
 Location: Locate sign in lawn on northeast side of street.



Sign 63



Location Map
 (Scale 1"=100')

Design Team:



30% Design Document Package
La Porte Wayfinding Signage
 LaPorte, Indiana

Sheet Title:

Signs 62 and 63

Date: November 1, 2017

Drawn By: NGD

Scale: Per Location Map

Project: 2017-0078



Sheet
49



Sign 64

Sign 64 Information

Sign Type: B
 Detail Sheet: Sheet 6
 Right-of-Way: City of La Porte (Scott Street)
 Location: Locate sign in lawn on west side of Boyd Boulevard.



Location Map
(Scale 1"=50')

Design Team:



30% Design Document Package
La Porte Wayfinding Signage
 LaPorte, Indiana

Sheet Title:

Signs 64 and 65

Date: November 1, 2017

Drawn By: NGD

Scale: Per Location Map

Project: 2017-0078



Sheet
50



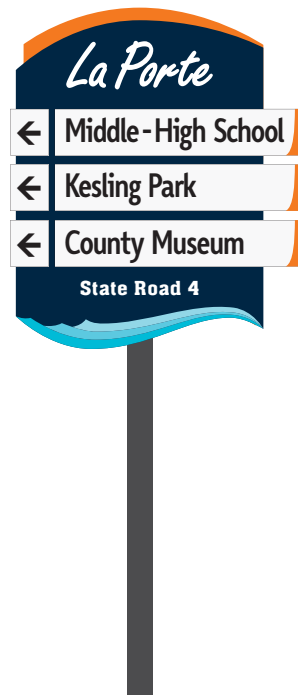
Sign 65

Sign 65 Information

Sign Type: A
 Detail Sheet: Sheet 5
 Right-of-Way: INDOT (State Road 4/Monroe Street)
 Location: Locate sign in lawn panel on north side of State Road 4.



Location Map
(Scale 1"=100')



Sign 66

Sign 66 Information

Sign Type: A
 Detail Sheet: Sheet 5
 Right-of-Way: INDOT (State Road 4/Monroe Street)
 Location: Locate sign in lawn on north side of State Road 4 west of Grandview Avenue.



Location Map
(Scale 1"=100')

Design Team:



30% Design Document Package
La Porte Wayfinding Signage
 LaPorte, Indiana

Sheet Title:

Signs 66 and 67

Date: November 1, 2017

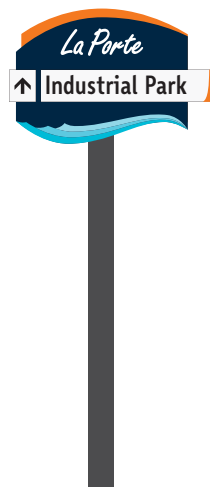
Drawn By: NGD

Scale: Per Location Map

Project: 2017-0078



Sheet
51



Sign 67

Sign 67 Information

Sign Type: D
 Detail Sheet: Sheet 8
 Right-of-Way: City of La Porte (Boyd Boulevard)
 Location: Locate sign in lawn on east side of Boyd Boulevard.



Location Map
(Scale 1"=100')

Sign 68 Information

Sign Type: D
 Detail Sheet: Sheet 8
 Right-of-Way: City of La Porte (Kingsbury Avenue)
 Location: Locate sign in lawn panel on west side of Kingsbury Avenue.



Sign 68



Location Map
 (Scale 1"=50')

Sign 69 Information

Sign Type: A
 Detail Sheet: Sheet 5
 Right-of-Way: INDOT (US 35/Indiana Avenue)
 Location: Locate sign in lawn median of US 35.



Sign 69



Location Map
 (Scale 1"=100')

Design Team:



30% Design Document Package
La Porte Wayfinding Signage
 LaPorte, Indiana

Sheet Title:

Signs 68 and 69

Date: November 1, 2017

Drawn By: NGD

Scale: Per Location Map

Project: 2017-0078



Sheet
52



Sign 70

Sign 70 Information

Sign Type: B
 Detail Sheet: Sheet 6
 Right-of-Way: City of La Porte (Crescent Drive)
 Location: Locate sign in lawn area on north side of Crescent Drive.



Location Map
(Scale 1"=100')

Design Team:



30% Design Document Package
La Porte Wayfinding Signage
 LaPorte, Indiana

Sheet Title:

Signs 70 and 71

Date: November 1, 2017

Drawn By: NGD

Scale: Per Location Map

Project: 2017-0078



Sheet
53



Sign 71

Sign 71 Information

Sign Type: A
 Detail Sheet: Sheet 5
 Right-of-Way: INDOT (US 35/Indiana Avenue)
 Location: Locate sign in lawn on west side of US 35.



Location Map
(Scale 1"=100')



Sign 72

Sign 72 Information

Sign Type: A
 Detail Sheet: Sheet 5
 Right-of-Way: City of La Porte (Crescent Drive)
 Location: Locate sign in lawn panel on south side of Crescent Drive.



Location Map
(Scale 1"=100')

Design Team:



30% Design Document Package
La Porte Wayfinding Signage
 LaPorte, Indiana

Sheet Title:

Signs 72 and 73

Date: November 1, 2017
 Drawn By: NGD
 Scale: Per Location Map
 Project: 2017-0078



Sheet
54



Sign 73

Sign 73 Information

Sign Type: A
 Detail Sheet: Sheet 5
 Right-of-Way: INDOT (US 35/Indiana Avenue)
 Location: Locate sign in lawn area to the east of US 35.



Location Map
(Scale 1"=150')



Sign 74

Sign 74 Information

Sign Type: A
 Detail Sheet: Sheet 5
 Right-of-Way: INDOT (US 35/Indiana Avenue)
 Location: Locate sign in lawn area on east side of US 35.



Location Map
(Scale 1"=150')

Design Team:



30% Design Document Package
La Porte Wayfinding Signage
 LaPorte, Indiana

Sheet Title:

Signs 74 and 75

Date: November 1, 2017

Drawn By: NGD

Scale: Per Location Map

Project: 2017-0078



Sheet
55



Sign 75

Sign 75 Information

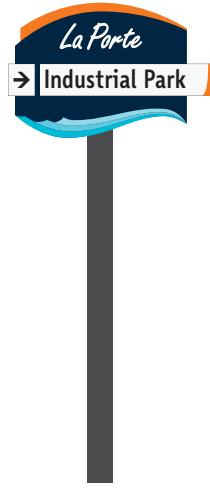
Sign Type: C
 Detail Sheet: Sheet 7
 Right-of-Way: City of La Porte (Boyd Boulevard)
 Location: Locate sign in lawn area of clearing on north side of Boyd Boulevard.



Location Map
(Scale 1"=100')

Sign 76 Information

Sign Type: D
 Detail Sheet: Sheet 8
 Right-of-Way: INDOT (US 35/Indiana Avenue)
 Location: Locate sign in lawn area on east side of US 35.



Sign 76



Location Map
 (Scale 1"=150')

Design Team:



30% Design Document Package
La Porte Wayfinding Signage
 LaPorte, Indiana

Sheet Title:

Sign 76

Date: November 1, 2017

Drawn By: NGD

Scale: Per Location Map

Project: 2017-0078



Sheet
56



Gateway Type 'A'
See Sheet 59



Gateway Type 'B'
See Sheet 60

Design Team:



30% Design Document Package
La Porte Wayfinding Signage
LaPorte, Indiana

Sheet Title:

Gateway Examples

Date:	November 1, 2017
Drawn By:	NGD
Scale:	NTS
Project:	2017-0078



Sheet
57

GATEWAY COLORS AND FINISHES

Gateway Body Colors (for Vinyl Paint w/Closest PMS equivalent denoted)



La Porte Panel Color (PMS 302)



Bottom Panel Accent Color (PMS 7459)



Copy Color, White Reflective Vinyl



Top Panel Accent Color (PMS 2018)



Bottom Panel Accent Color (PMS 7457)

CITY SEAL PRINT COLORS

Seal, image provided by City of La Porte, shall be printed on a singular 3M exterior grade pressure sensitive vinyl sheet and applied to gateway panel.



City Seal Color, Black



City Seal Color, Brushed Silver Aluminum

GATEWAY PANEL TYPOGRAPHY

akaChen Font - For All Gateway Types

Substitutions for font styles is not permitted.

Aa Bb Cc Dd Ee Gg Hh Ii
Jj Kk Ll Mm Nn Oo Pp Qq Rr
1 2 3 4 5 6 7 8 9 0

LA PORTE TEXT DIMENSIONS



Design Team:



30% Design Document Package

La Porte Wayfinding Signage
LaPorte, Indiana

Sheet Title:
Gateway Panel Details
Colors, Finishes & Fonts

Date: November 1, 2017
 Drawn By: NGD
 Scale: NTS
 Project: 2017-0078



Sheet
58

1/4" Thick, 6061 aluminum plate panel, painted gloss PMS 2018 mounted on top of corten steel

Copy shall be white reflective vinyl 4 1/4" tall uppercase and 3 1/2" tall lowercase

3" thick backlight acrylic lettering, white color

1/4" Thick, 6061 aluminum plate panel, painted gloss PMS 302

Corten steel panel 6" thick, pre-weathered

City Seal on 1/4" thick 6061 aluminum plate panel, black vinyl and brushed silver aluminum, 2'-6" in diameter.

1/4" Thick, 6061 aluminum plate panel, painted gloss PMS 7457

1/4" Thick, 6061 aluminum plate panel, painted gloss PMS 7459

1/4" Thick, 6061 aluminum plate panel, painted gloss PMS 302

Foundation per detail Sheet 61



Design Team:



30% Design Document Package
La Porte Wayfinding Signage
 LaPorte, Indiana

Sheet Title:

Gateway Type 'A' Detail

Date: November 1, 2017

Drawn By: NGD

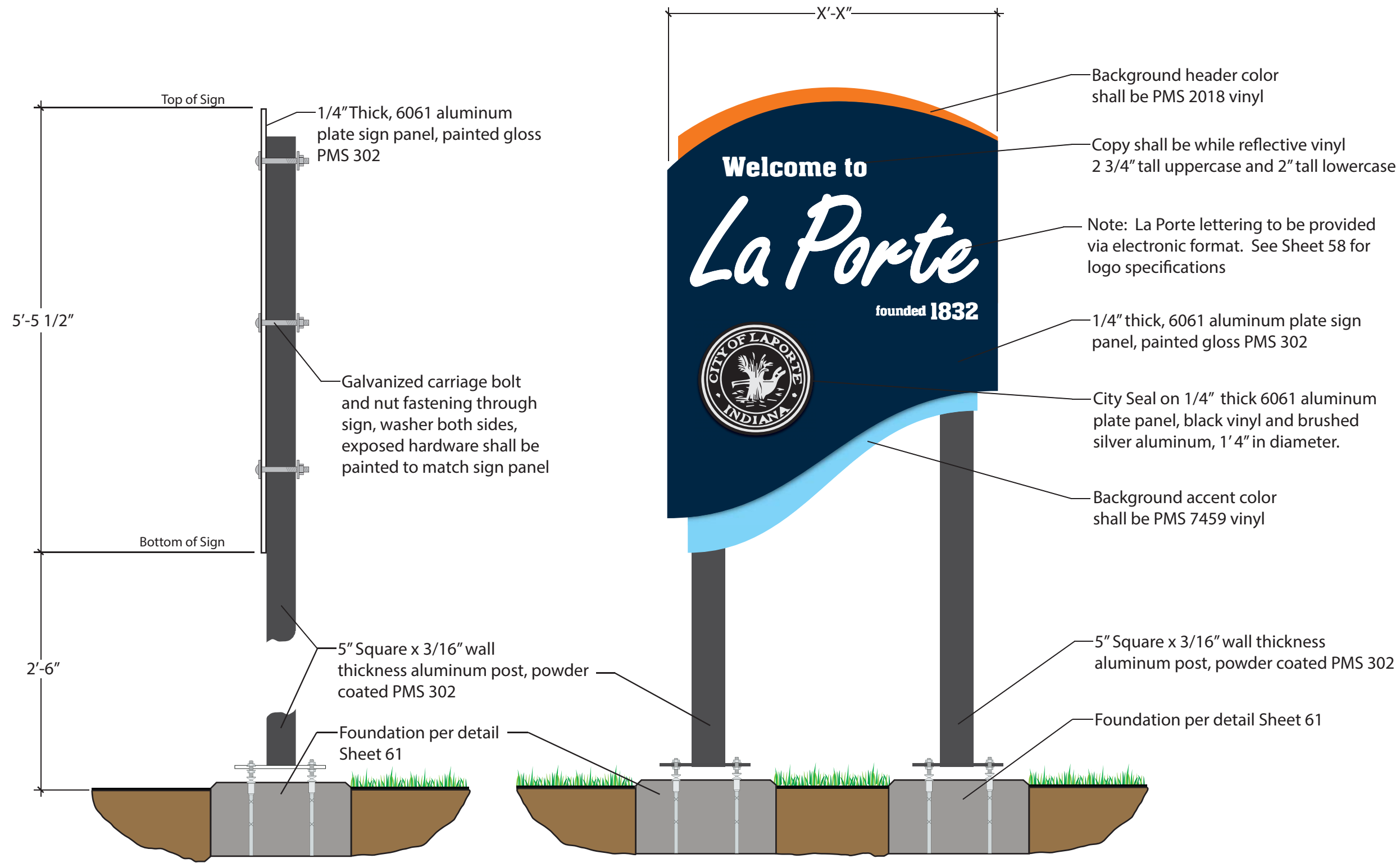
Scale: NTS

Project: 2017-0078



Sheet

59



Design Team:



30% Design Document Package

La Porte Wayfinding Signage

LaPorte, Indiana

Sheet Title:

Gateway Type 'B' Detail

Date: November 1, 2017

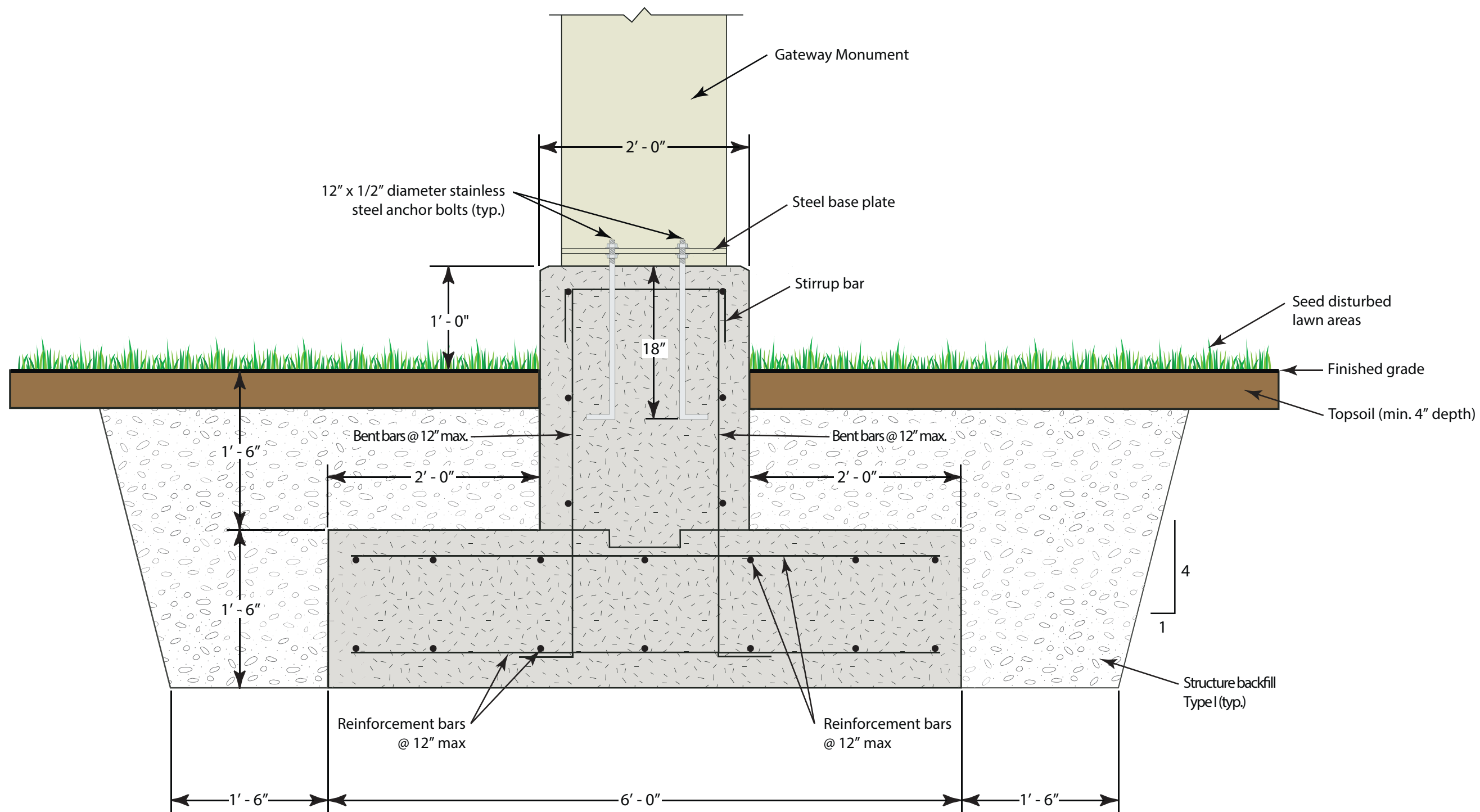
Drawn By: NGD

Scale: NTS

Project: 2017-0078



Sheet
60



Foundation Elevation
GATEWAY FOUNDATION DETAIL

Design Team:



30% Design Document Package
La Porte Wayfinding Signage
 LaPorte, Indiana

Sheet Title:

Gateway Foundation Details

Date: November 1, 2017

Drawn By: NGD

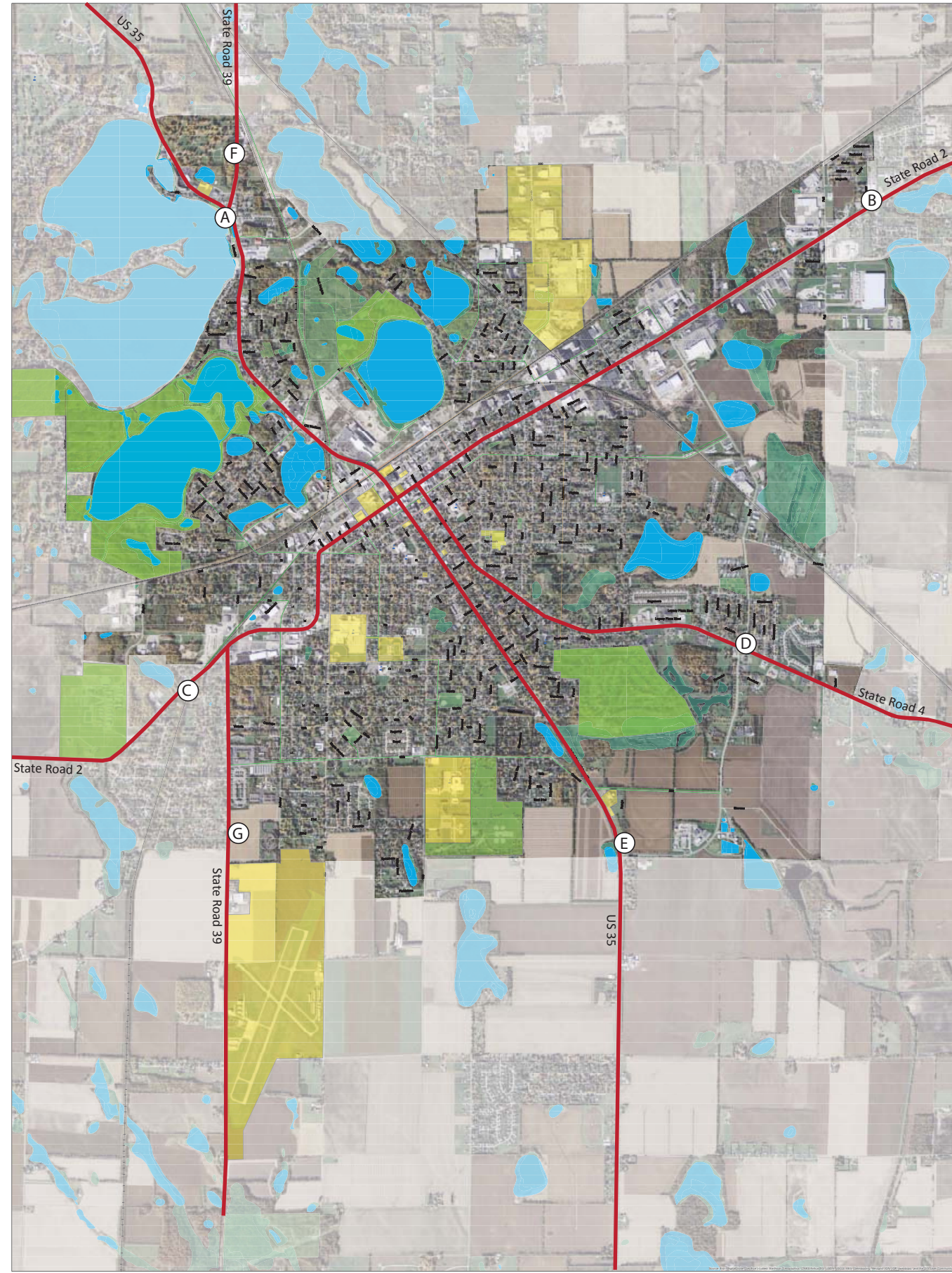
Scale: NTS

Project: 2017-0078



Sheet

61



Design Team:



30% Design Document Package

La Porte Wayfinding Signage

LaPorte, Indiana

Sheet Title:
Gateway Location Key
Map

Date: November 1, 2017
 Drawn By: NGD
 Scale: NTS
 Project: 2017-0078



Sheet
62



Gateway A

Gateway A Information

Gateway Type: A
 Detail Sheet: Sheet 59
 Right-of-Way: INDOT (US 35/Pine Lake Avenue)
 Location: Locate sign within Kiwanis-Teledyne Park property, south of the intersection of US 35 and State Road 39.



Location Map
(Scale 1"=100')

Design Team:



30% Design Document Package
La Porte Wayfinding Signage
 LaPorte, Indiana

Sheet Title:

Gateways A and B

Date: November 1, 2017

Drawn By: NGD

Scale: Per Location Map

Project: 2017-0078



Sheet
63



Gateway B

Gateway B Information

Gateway Type: A
 Detail Sheet: Sheet 59
 Right-of-Way: INDOT (State Road 2/Lincolnway)
 Location: Locate gateway in lawn panel between street and highway. Gateway to be located on the north side of the drainage swale.



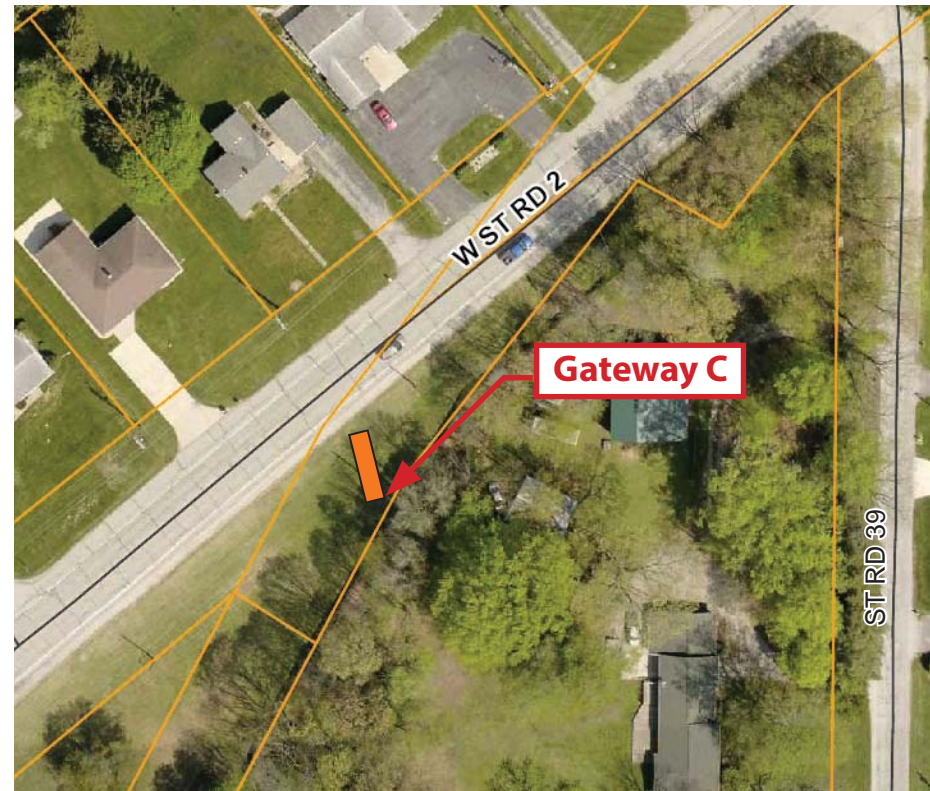
Location Map
(Scale 1"=100')



Gateway C

Gateway C Information

Gateway Type: A
 Detail Sheet: Sheet 59
 Right-of-Way: INDOT (State Road 2)
 Location: Locate gateway in lawn area to east of State Road 2.



Location Map
 (Scale 1"=100')

Design Team:



30% Design Document Package
La Porte Wayfinding Signage
 LaPorte, Indiana

Sheet Title:

Gateways C and D

Date: November 1, 2017

Drawn By: NGD

Scale: Per Location Map

Project: 2017-0078



Sheet
64



Gateway D

Gateway D Information

Gateway Type: A
 Detail Sheet: Sheet 59
 Right-of-Way: INDOT (State Road 4)
 Location: Locate gateway within Hastings Park in lawn area on north side of State Road 4 near the existing City signage.



Location Map
 (Scale 1"=50')



Gateway E

Gateway E Information

Gateway Type: A
 Detail Sheet: Sheet 59
 Right-of-Way: INDOT (US 35/Indiana Avenue)
 Location: Locate gateway in lawn area east of US 35 near existing City signage.



Location Map
 (Scale 1"=100')

Design Team:



30% Design Document Package
La Porte Wayfinding Signage
 LaPorte, Indiana

Sheet Title:

Gateways E and F

Date: November 1, 2017

Drawn By: NGD

Scale: Per Location Map

Project: 2017-0078



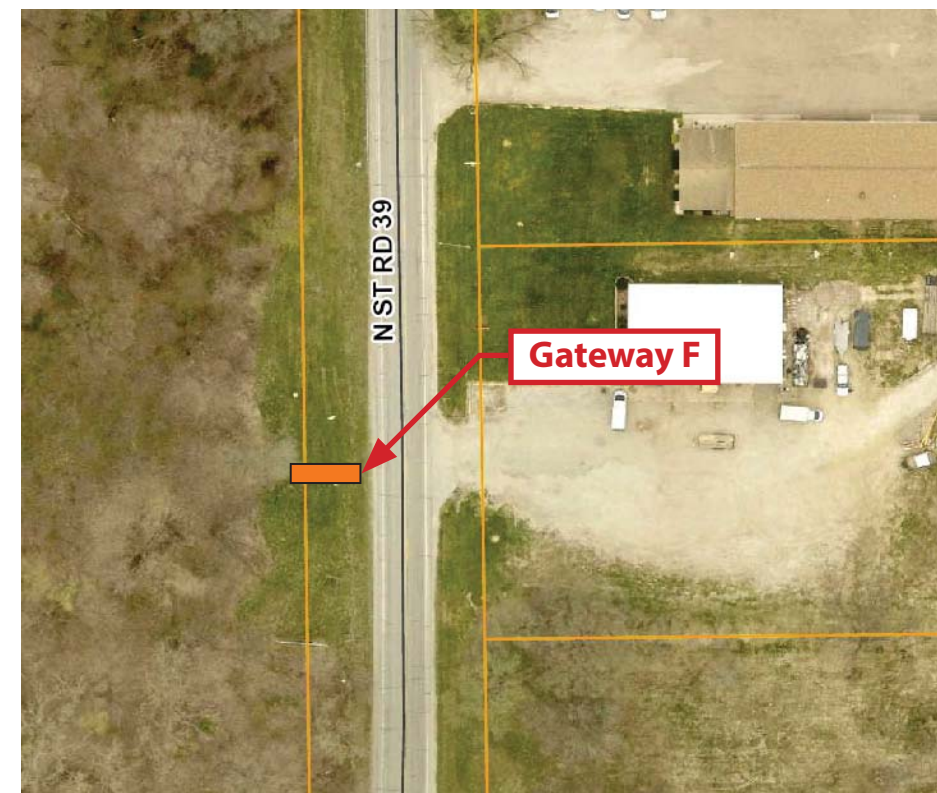
Sheet
65

Gateway F Information

Gateway Type: B
 Detail Sheet: Sheet 60
 Right-of-Way: INDOT (State Road 39)
 Location: Locate gateway in lawn area west of State Road 39 near existing City signage.



Gateway F



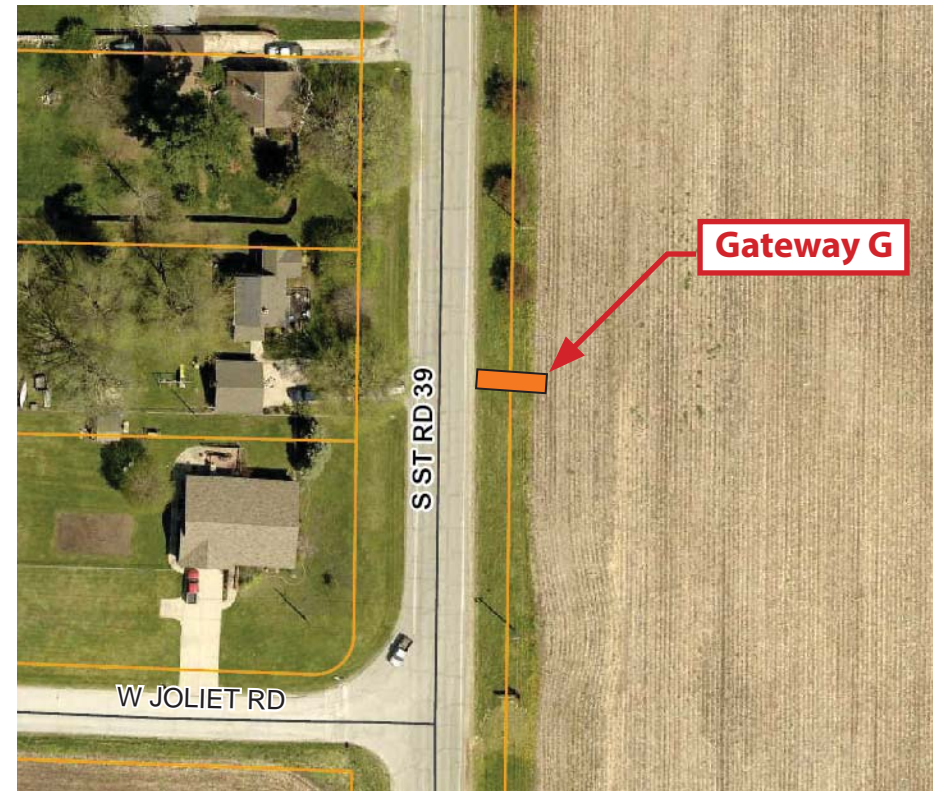
Location Map
 (Scale 1"=100')

Gateway G Information

Gateway Type: B
 Detail Sheet: Sheet 60
 Right-of-Way: INDOT (State Road 39)
 Location: Locate gateway in lawn area east of State Road 39 south of existing trees.



Gateway G



Location Map
 (Scale 1"=100')

Design Team:



30% Design Document Package
La Porte Wayfinding Signage
 LaPorte, Indiana

Sheet Title:

Gateway G

Date: November 1, 2017

Drawn By: NGD

Scale: Per Location Map

Project: 2017-0078



Sheet
66



440 East Brackenridge Street
Fort Wayne, Indiana 46802
260-424-2366



108 West Columbia Street
Fort Wayne, Indiana 46802
260-422-2522



7212 North Shadeland Avenue, Suite 200
Indianapolis, Indiana 46250
317-579-9100